

Cerro Gordo County, Iowa
Iowa North Zone (1401)
Horiz. Datum: **NAD83(NA2011)**
Vert. Datum: NAVD 1988
US Survey Feet
2013

Point Name: **151**

Designation: G151 (Set by WHKS & Co. in 2002)

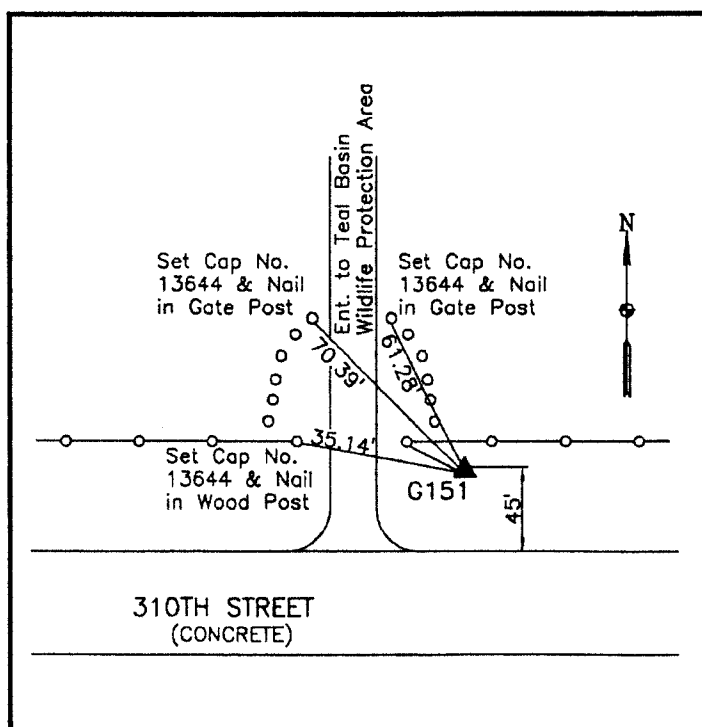
Northing: **3905367.28sft** Easting: **4936614.96sft**

Orthometric Height: **1265.58sft** Ellipsoid Height: **1170.65sft** **Geoid12A**

Latitude: **N43°12'49.29176"** Longitude: **W93°26'32.51412"**

Mapping Angle: **0°02'21"** Combination Scale Factor: **0.999934899**

Monument Type: 5/8" x 6'-0" long aluminum rod with cap stamped G151 and NGS style access cover 2" deep.



North side 310th Street -
1000'± west of Dogwood
Avenue - 6'± east and 3'±
south of a brace post - east
side driveway to Teal Basinas
Wildlife Protection Area - near
NW Corner Section 22-T97N-
R22W.

WHKS & CO.

This document was prepared by DCI on 09-30-2013 for use by Cerro Gordo County, Iowa.