

**Cerro Gordo County, Iowa**  
Iowa North Zone (1401)  
Horiz. Datum: **NAD83(NA2011)**  
Vert. Datum: NAVD 1988  
US Survey Feet  
**2013**

Point Name: **152**

**Designation:** G152 (Set by WHKS & Co. in 2002)

Northing: **3905144.71sft** Easting: **4953830.14sft**

Orthometric Height: **1217.51sft** Ellipsoid Height: **1123.54sft** **Geoid12A**

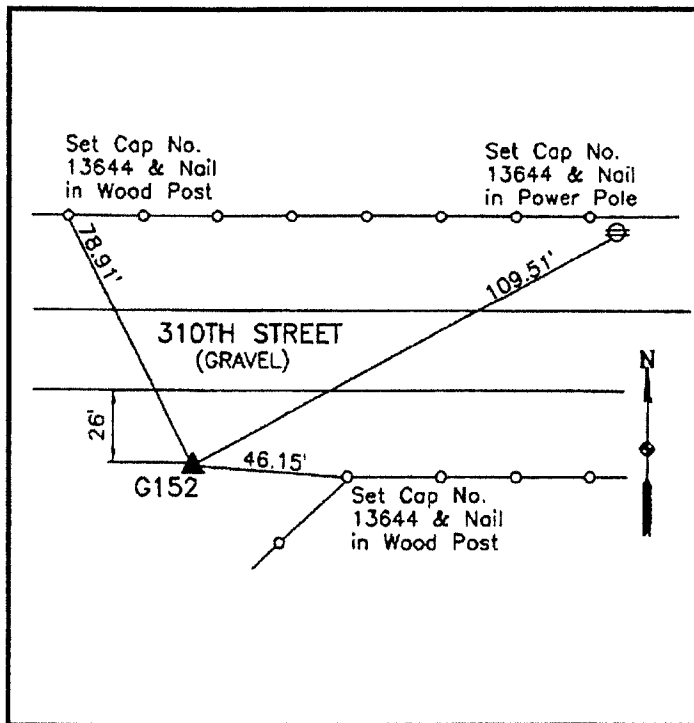
Latitude: **N43°12'46.91260"**

Longitude: **W93°22'40.04763"**

Mapping Angle: **0°04'58"**

Combination Scale Factor: **0.999937037**

**Monument Type:** 5/8" x 6'-0" long aluminum rod with cap stamped G152 and NGS style access cover 1" deep.



South side 310th Street - 500'±  
east of Grouse Avenue - 50'±  
west of a corner post - near  
NW Corner Section 19-T97N-  
R21W.

**WHKS & CO.**

*This document was prepared by DCI on 09-30-2013 for use by Cerro Gordo County, Iowa.*