

Cerro Gordo County, Iowa
Iowa North Zone (1401)
Horiz. Datum: **NAD83(NA2011)**
Vert. Datum: NAVD 1988
US Survey Feet
2013

Point Name: **153**

Designation: G153 (Set by WHKS & Co. in 2002)

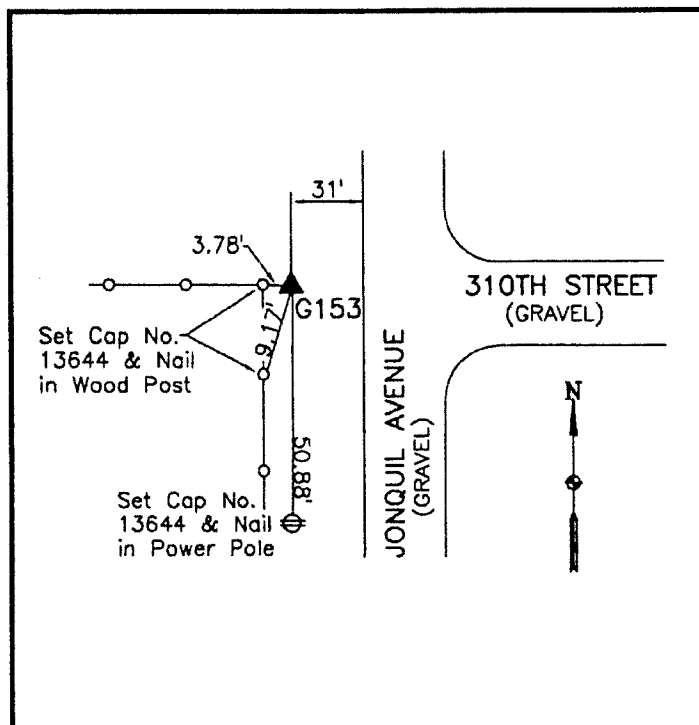
Northing: **3905196.91sft** Easting: **4969257.16sft**

Orthometric Height: **1196.65sft** Ellipsoid Height: **1103.31sft** **Geoid12A**

Latitude: **N43°12'47.15571"** Longitude: **W93°19'11.72495"**

Mapping Angle: **0°07'19"** Combination Scale Factor: **0.999938013**

Monument Type: 5/8" x 6'-0" long aluminum rod with cap stamped G153 and NGS style access cover 2" deep.



West side intersection Jonquil Avenue and 310th Street - 3'± east of a corner post - near NW Corner Section 22-T97N-R21W.

WHKS & CO.