

Cerro Gordo County, Iowa
Iowa North Zone (1401)
Horiz. Datum: **NAD83(NA2011)**
Vert. Datum: NAVD 1988
US Survey Feet
2013

Point Name: **154**

Designation: G154 (Set by WHKS & Co. in 2002)

Northing: **3900029.61sft** Easting: **4979598.66sft**

Orthometric Height: **1159.18sft** Ellipsoid Height: **1066.20sft** **Geoid12A**

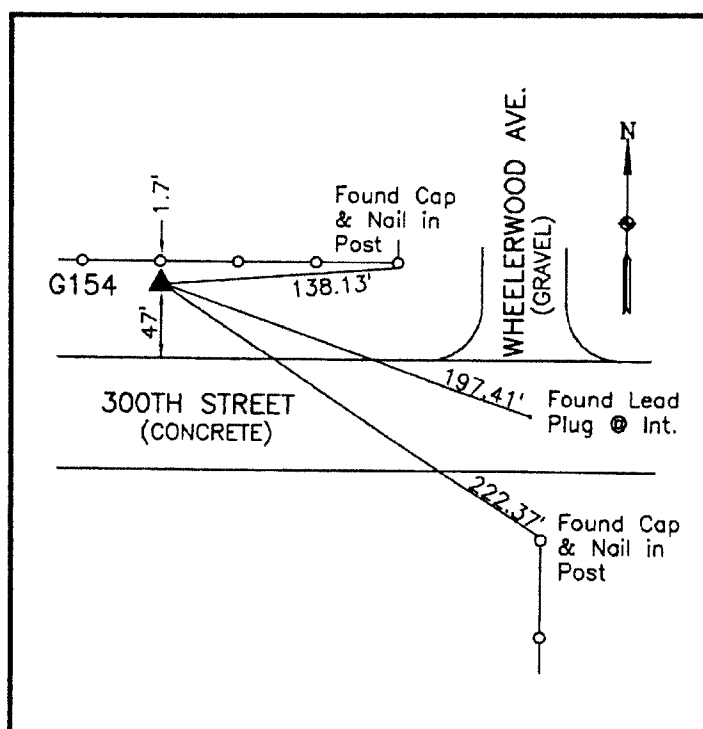
Latitude: **N43°11'55.87792"**

Longitude: **W93°16'52.25735"**

Mapping Angle: **0°08'54"**

Combination Scale Factor: **0.999937446**

Monument Type: 5/8" x 6'-0" long aluminum rod with cap stamped G154 and NGS style access cover 2" deep.



On north side 300th Street
(County Road B-20) - 150'±
west of intersection of 300th
Street and Wheelerwood
Drive - 1'± south of wood post -
near NW Corner Section 25-
T97N-R21W.

WHKS & CO.

This document was prepared by DCI on 09-30-2013 for use by Cerro Gordo County, Iowa.