

Cerro Gordo County, Iowa
Iowa North Zone (1401)
Horiz. Datum: **NAD83(NA2011)**
Vert. Datum: NAVD 1988
US Survey Feet
2013

Point Name: **155**

Designation: G155 (Set by WHKS & Co. in 2002)

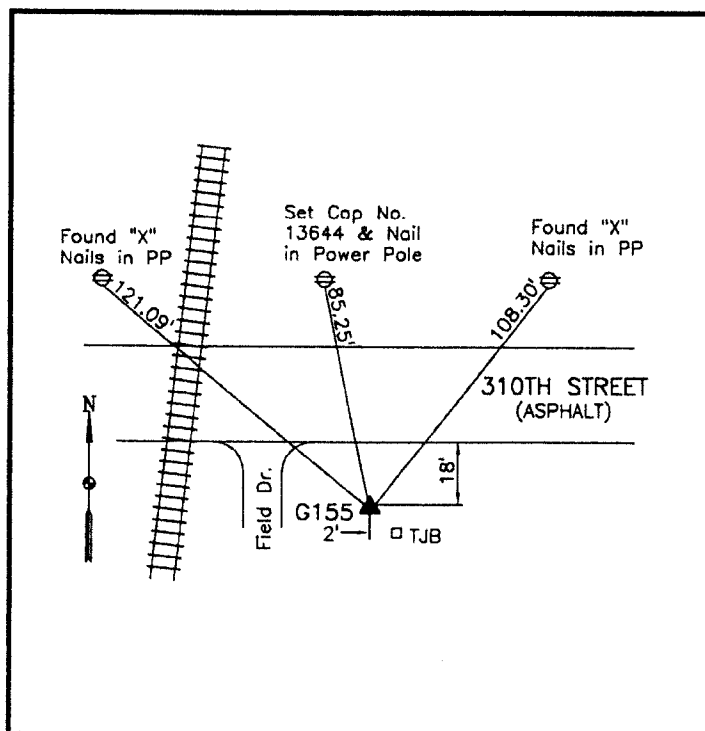
Northing: **3905206.78sft** Easting: **5000930.83sft**

Orthometric Height: **1145.14sft** Ellipsoid Height: **1051.96sft** **Geoid12A**

Latitude: **N43°12'46.36706"** Longitude: **W93°12'04.01500"**

Mapping Angle: **0°12'09"** Combination Scale Factor: **0.999940426**

Monument Type: 5/8" x 6'-0" long aluminum rod with cap stamped G155 and NGS style access cover 2" deep.



South side 310th Street - 90'±
east of railroad - 2'± west and
2'± north of a telephone
pedestal - near NW Corner
Section 22-T97N-R20W.

WHKS & co.

This document was prepared by DCI on 09-30-2013 for use by Cerro Gordo County, Iowa.