

Cerro Gordo County, Iowa
Iowa North Zone (1401)
Horiz. Datum: **NAD83(NA2011)**
Vert. Datum: NAVD 1988
US Survey Feet
2013

Point Name: **156**

Designation: G156 (Set by WHKS & Co. in 2002)

Northing: **3904137.71sft** Easting: **5016883.89sft**

Orthometric Height: **1182.90sft** Ellipsoid Height: **1089.01sft** **Geoid12A**

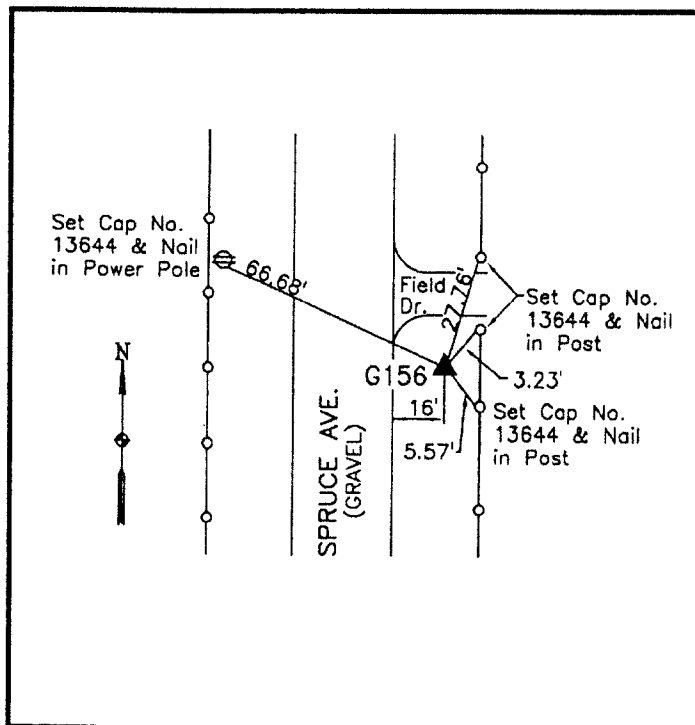
Latitude: **N43°12'35.19519"**

Longitude: **W93°08'28.65352"**

Mapping Angle: **0°14'35"**

Combination Scale Factor: **0.999938144**

Monument Type: 5/8" x 6'-0" long aluminum rod with cap stamped G156 and NGS style access cover 1" deep.



East side Spruce Avenue -
0.25± mile south of 310th
Street - south side of field
entrance - near NW Corner
Section 19-T97N-R19W.

WHKS & CO.

This document was prepared by DCI on 09-30-2013 for use by Cerro Gordo County, Iowa.