

**Cerro Gordo County, Iowa**  
Iowa North Zone (1401)  
Horiz. Datum: **NAD83(NA2011)**  
Vert. Datum: NAVD 1988  
US Survey Feet  
**2013**

Point Name: **157**

**Designation:** G157 (Set by WHKS & Co. in 2002)

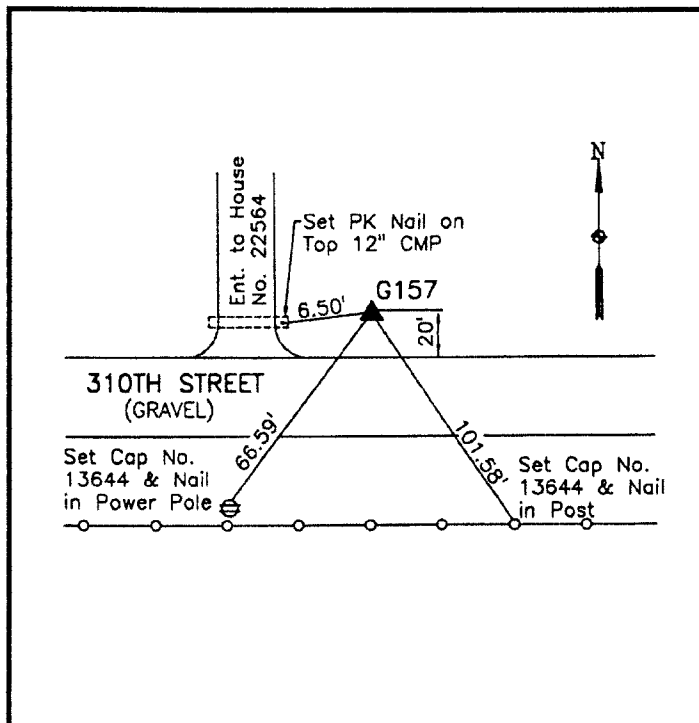
Northing: **3905379.54sft** Easting: **5033720.97sft**

Orthometric Height: **1125.22sft** Ellipsoid Height: **1030.08sft** **Geoid12A**

Latitude: **N43°12'46.69275"** Longitude: **W93°04'41.22180"**

Mapping Angle: **0°17'09"** Combination Scale Factor: **0.999941485**

**Monument Type:** 5/8" x 6'-0" long aluminum rod with cap stamped G157 and NGS style access cover 1" deep.



North side 310th Street - 15'± east of driveway to Residence No. 22264 - 0.25± mile east of Vine Avenue - near NW Corner Section 22-T97N-R19W.

**WHKS & CO.**

*This document was prepared by DCI on 09-30-2013 for use by Cerro Gordo County, Iowa.*