

Cerro Gordo County, Iowa
Iowa North Zone (1401)
Horiz. Datum: **NAD83(NA2011)**
Vert. Datum: NAVD 1988
US Survey Feet
2013

Point Name: **158**

Designation: G158 (Set by WHKS & Co. in 2002)

Northing: **3920931.91sft** Easting: **5046664.75sft**

Orthometric Height: **1221.29sft** Ellipsoid Height: **1125.46sft** **Geoid12A**

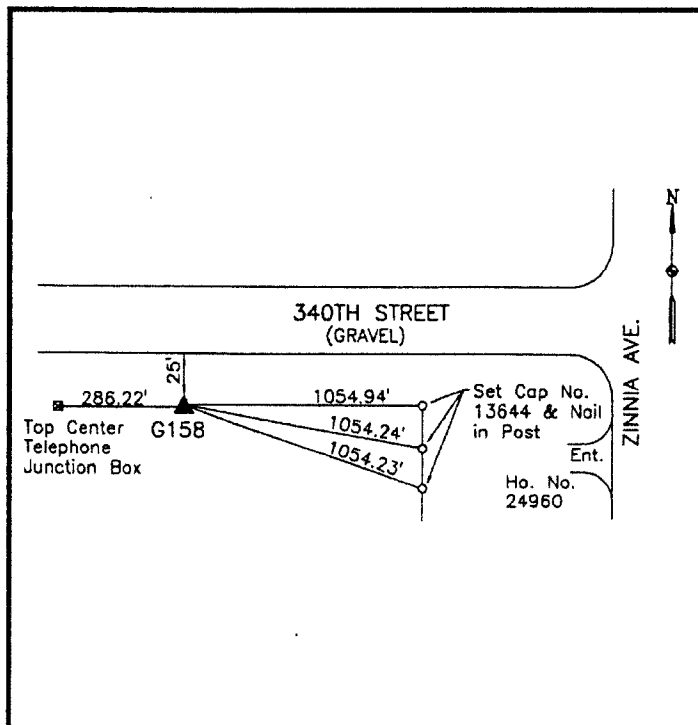
Latitude: **N43°15'19.62369"**

Longitude: **W93°01'45.26637"**

Mapping Angle: **0°19'09"**

Combination Scale Factor: **0.999944274**

Monument Type: 5/8" x 6'-0" long aluminum rod with cap stamped G158 and NGS style access cover 2" deep.



South side 340th Street - 0.25±
mile west of Zinnia Avenue -
10'± east of a field entrance -
near NE Corner Section 1-
T97N-R19W.

WHKS & CO.

This document was prepared by DCI on 09-30-2013 for use by Cerro Gordo County, Iowa.