

Cerro Gordo County, Iowa
Iowa North Zone (1401)
Horiz. Datum: **NAD83(NA2011)**
Vert. Datum: NAVD 1988
US Survey Feet
2013

Point Name: **159**

Designation: G159 (Set by WHKS & Co. in 2002)

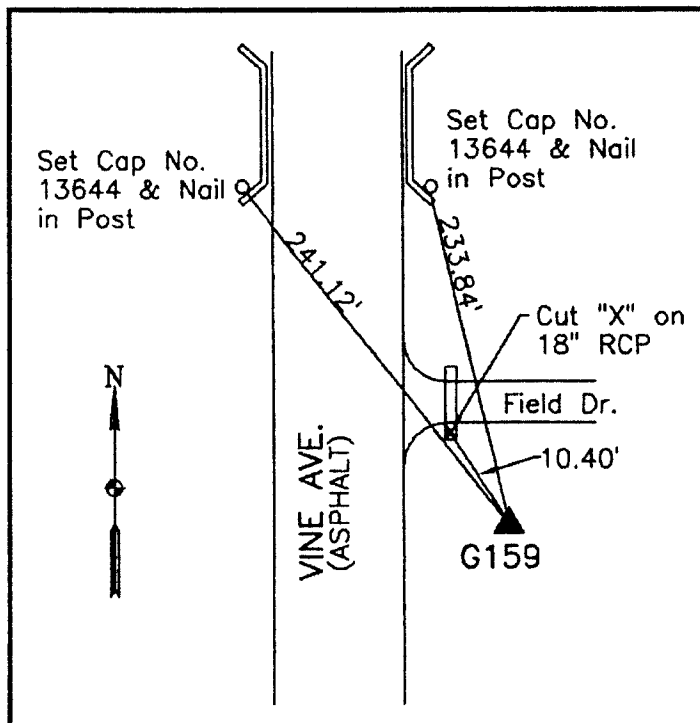
Northing: **3919810.44sft** Easting: **5032216.89sft**

Orthometric Height: **1144.50sft** Ellipsoid Height: **1049.78sft** **Geoid12A**

Latitude: **N43°15'09.29616"** Longitude: **W93°05'00.57214"**

Mapping Angle: **0°16'56"** Combination Scale Factor: **0.999947371**

Monument Type: 5/8" x 6'-0" long aluminum rod with cap stamped G159 and NGS style access cover 2" deep.



East side Vine Avenue - 0.2± mile south of 340th Street - south side of field entrance - near NW Corner Section 3-T97N-R19W.

WHKS & CO.