

Cerro Gordo County, Iowa
Iowa North Zone (1401)
Horiz. Datum: **NAD83(NA2011)**
Vert. Datum: NAVD 1988
US Survey Feet
2013

Point Name: **160**

Designation: G160 (Set by WHKS & Co. in 2002)

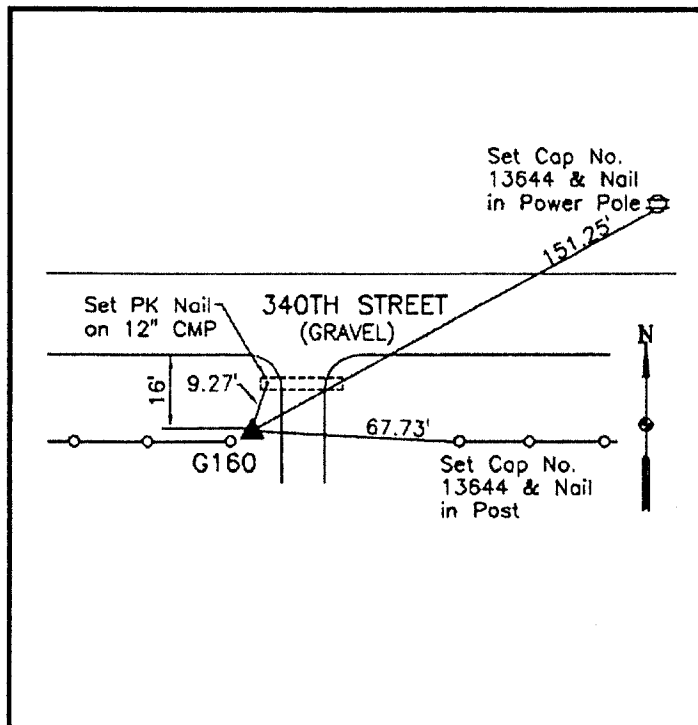
Northing: **3920640.03sft** Easting: **5017571.34sft**

Orthometric Height: **1164.84sft** Ellipsoid Height: **1071.04sft** **Geoid12A**

Latitude: **N43°15'18.15539"** Longitude: **W93°08'18.41803"**

Mapping Angle: **0°14'42"** Combination Scale Factor: **0.999946797**

Monument Type: 5/8" x 6'-0" long aluminum rod with cap stamped G160 and NGS style access cover 2" deep.



South side 340th Street - 0.25±
mile east of Spruce Avenue -
west side of field entrance -
near NW Corner Section 6-
T97N-R19W.

=====
WHKS & CO. =====

This document was prepared by DCI on 09-30-2013 for use by Cerro Gordo County, Iowa.