

Cerro Gordo County, Iowa
 Iowa North Zone (1401)
 Horiz. Datum: **NAD83(NA2011)**
 Vert. Datum: NAVD 1988
 US Survey Feet
2013

Point Name: **161**

Designation: G161 (Set by WHKS & Co. in 2002)

Northing: **3920539.28sft** Easting: **5000970.71sft**

Orthometric Height: **1156.00sft** Ellipsoid Height: **1062.69sft** **Geoid12A**

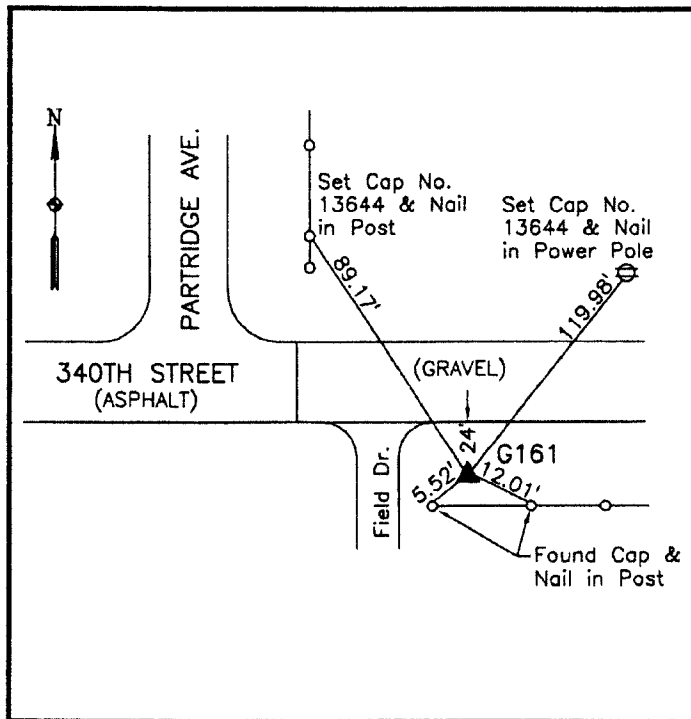
Latitude: **N43°15'17.80108"**

Longitude: **W93°12'02.74368"**

Mapping Angle: **0°12'10"**

Combination Scale Factor: **0.999947178**

Monument Type: 5/8" x 6'-0" long aluminum rod with cap stamped G161 and NGS style access cover 3" deep.



South side 340th Street - east side field entrance - 4'± east and 2'± north of gate post - 65'± east of NW Corner Section 3-T97N-R20W.

=====**WHKS & CO.**=====

This document was prepared by DCI on 09-30-2013 for use by Cerro Gordo County, Iowa.