

Cerro Gordo County, Iowa  
Iowa North Zone (1401)  
Horiz. Datum: **NAD83(NA2011)**  
Vert. Datum: NAVD 1988  
US Survey Feet  
**2013**

Point Name: **162**

**Designation:** G162 (Set by WHKS & Co. in 2002)

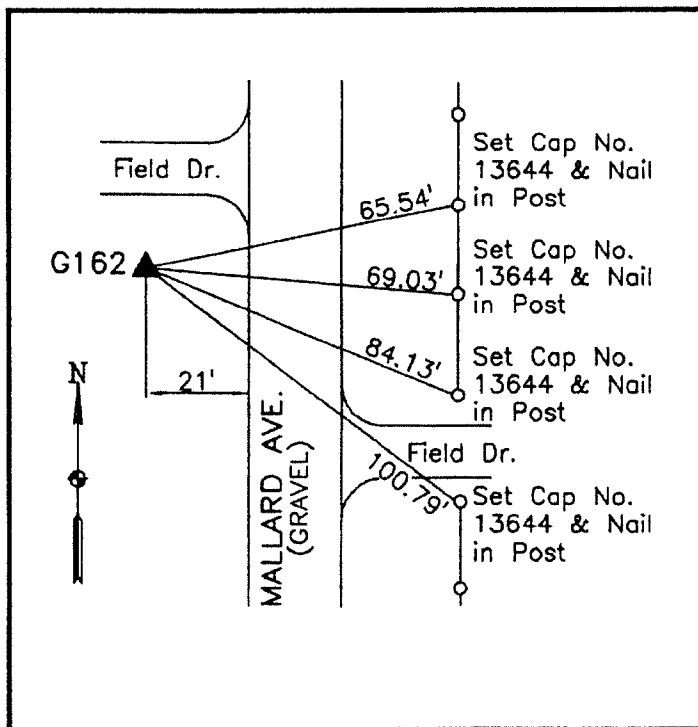
Northing: **3919518.19sft** Easting: **4985063.31sft**

Orthometric Height: **1199.85sft** Ellipsoid Height: **1106.51sft** **Geoid12A**

Latitude: **N43°15'08.21674"** Longitude: **W93°15'37.73621"**

Mapping Angle: **0°09'44"** Combination Scale Factor: **0.999944611**

**Monument Type:** 5/8" x 6'-0" long aluminum rod with cap stamped G162 and NGS style access cover 1" deep.



West side Mallard Avenue -  
0.2± mile south of 340th  
Street - south side of field  
entrance - near NW Corner  
Section 6-T97N-R20W.

**WHKS & CO.**