

**Cerro Gordo County, Iowa**  
Iowa North Zone (1401)  
Horiz. Datum: **NAD83(NA2011)**  
Vert. Datum: NAVD 1988  
US Survey Feet  
**2013**

Point Name: **163**

**Designation:** G163 (Set by WHKS & Co. in 2002)

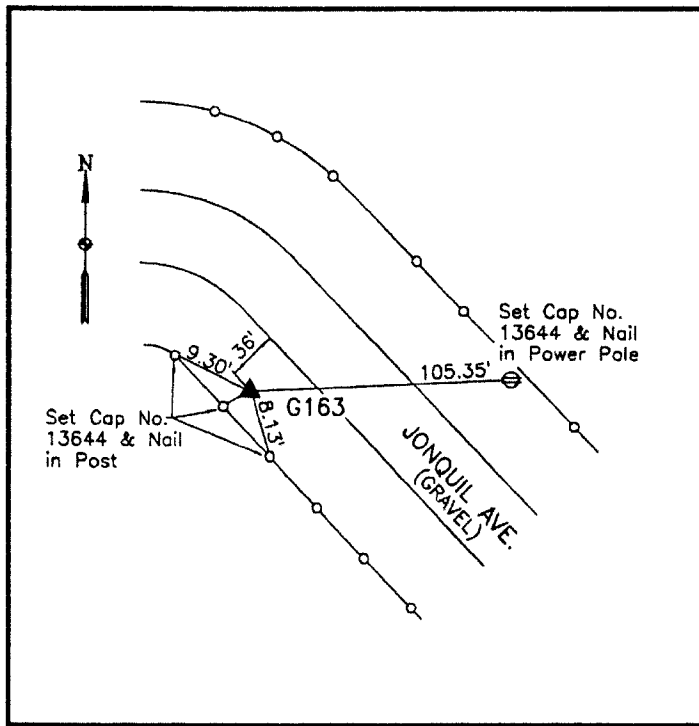
Northing: **3920423.00sft** Easting: **4968045.55sft**

Orthometric Height: **1168.43sft** Ellipsoid Height: **1074.56sft** **Geoid12A**

Latitude: **N43°15'17.56603"** Longitude: **W93°19'27.65889"**

Mapping Angle: **0°07'09"** Combination Scale Factor: **0.999946600**

**Monument Type:** 5/8" x 6'-0" long aluminum rod with cap stamped G163 and NGS style access cover 1" deep.



Southwesterly side 340th Street - 0.3± mile east of Ironwood Avenue - in line with fence running south - 0.25± mile west of NW Corner Section 3-T97N-R21W.

**WHKS & CO.**