

Cerro Gordo County, Iowa  
Iowa North Zone (1401)  
Horiz. Datum: **NAD83(NA2011)**  
Vert. Datum: NAVD 1988  
US Survey Feet  
**2013**

Point Name: **164**

**Designation:** G164 (Set by WHKS & Co. in 2002)

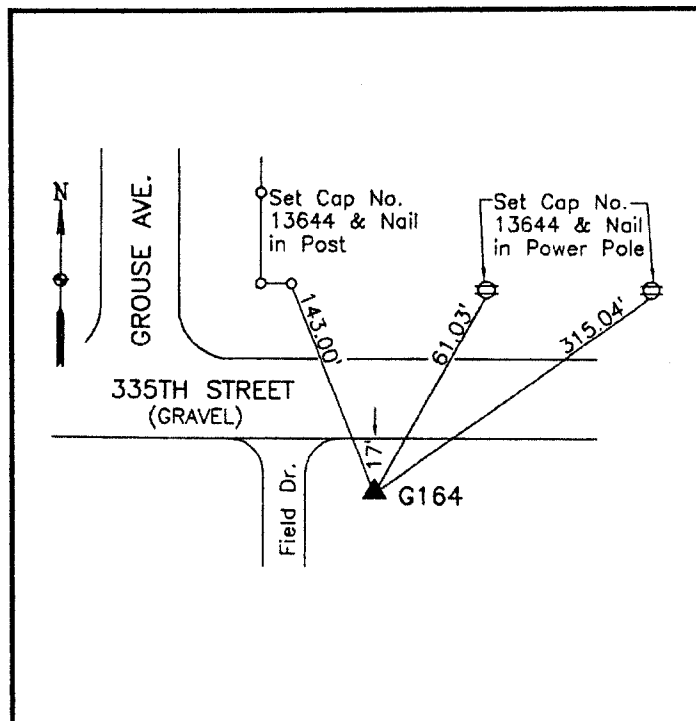
Northing: **3918346.30sft** Easting: **4953775.70sft**

Orthometric Height: **1227.13sft** Ellipsoid Height: **1132.67sft** **Geoid12A**

Latitude: **N43°14'57.30313"** Longitude: **W93°22'40.52534"**

Mapping Angle: **0°04'58"** Combination Scale Factor: **0.999942824**

**Monument Type:** 5/8" x 6'-0" long aluminum rod with cap stamped G164 and NGS style access cover 1" deep.



South side 335th Street - 150'±  
east of Grouse Avenue - east  
side of a field entrance - near  
West 1/4 Corner Section 6-  
T97N-R21W.

**WHKS & CO.**

*This document was prepared by DCI on 09-30-2013 for use by Cerro Gordo County, Iowa.*