

Cerro Gordo County, Iowa
Iowa North Zone (1401)
Horiz. Datum: **NAD83(NA2011)**
Vert. Datum: NAVD 1988
US Survey Feet
2013

Point Name: **165**

Designation: G165 (Set by WHKS & Co. in 2002)

Northing: **3919883.24sft** Easting: **4937794.97sft**

Orthometric Height: **1234.57sft** Ellipsoid Height: **1139.19sft** **Geoid12A**

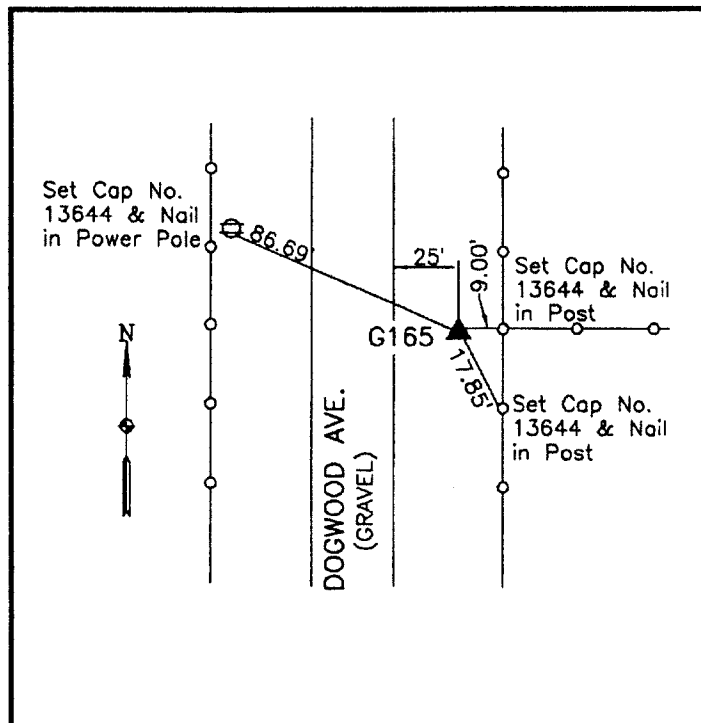
Latitude: **N43°15'12.65504"**

Longitude: **W93°26'16.43541"**

Mapping Angle: **0°02'32"**

Combination Scale Factor: **0.999943273**

Monument Type: 5/8" x 6'-0" long aluminum rod with cap stamped G165 and NGS style access cover 3" deep.



East side Dogwood Avenue -
0.1± mile south of 340th
Street - 6'± west of a corner
post - near NW Corner Section
3-T97N-R22W.

WHKS & CO.

This document was prepared by DCI on 09-30-2013 for use by Cerro Gordo County, Iowa.