

**Cerro Gordo County, Iowa**  
 Iowa North Zone (1401)  
 Horiz. Datum: **NAD83(NA2011)**  
 Vert. Datum: NAVD 1988  
 US Survey Feet  
**2013**

Point Name: **166 (Replaces 27)**

**Designation:** 2013-166 GPS Control Pt. (Set by DCI in 2013)

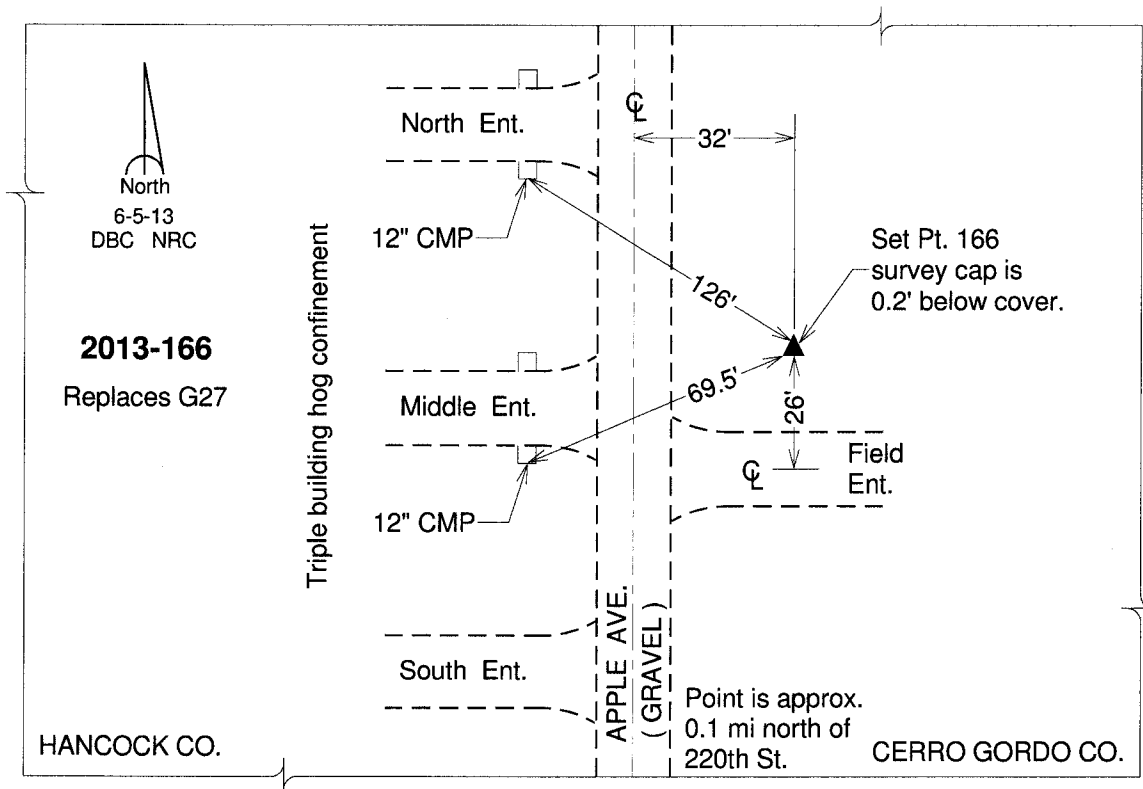
Northing: **3858420.41sft** Easting: **4921880.59sft**

Orthometric Height: **1257.74sft** Ellipsoid Height: **1163.64sft** **Geoid12A**

Latitude: **N43°05'05.64425"** Longitude: **W93°29'51.50236"**

Mapping Angle: **0°00'06"** Combination Scale Factor: **0.999916331**

**Monument Type:** Berntsen Top Security Rod Monument with a 2-1/2" dia. domed survey cap and permanent magnet encased in a white PVC pipe with a NGS style aluminum access cover.



*This document was prepared by DCI on 09-30-2013 for use by Cerro Gordo County, Iowa.*