

Cerro Gordo County, Iowa
Iowa North Zone (1401)
Horiz. Datum: **NAD83(NA2011)**
Vert. Datum: NAVD 1988
US Survey Feet
2013

Point Name: **167 (Replaces 120)**

Designation: 2013-167 GPS Control Pt. (Set by DCI in 2013)

Northing: **3825634.38sft** Easting: **4968635.33sft**

Orthometric Height: **1171.78sft** Ellipsoid Height: **1079.92sft** **Geoid12A**

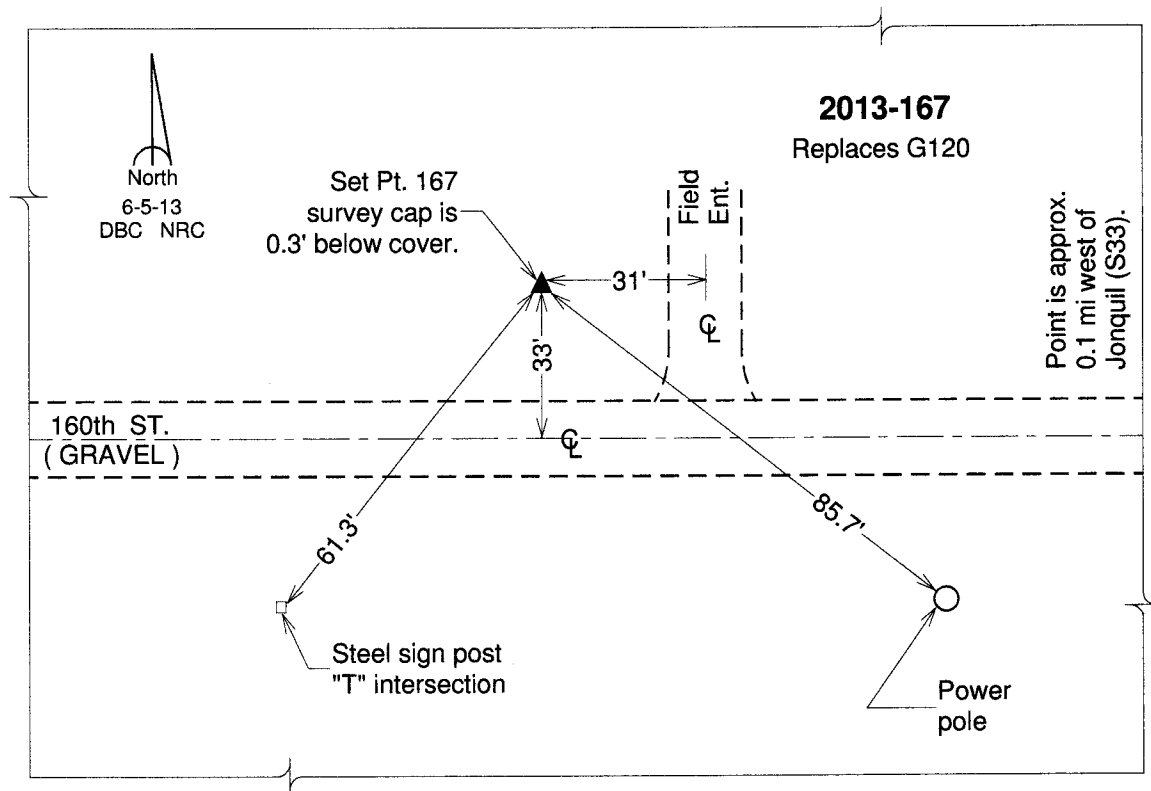
Latitude: **N42°59'41.31219"**

Longitude: **W93°19'22.37281"**

Mapping Angle: **0°07'12"**

Combination Scale Factor: **0.999910117**

Monument Type: Berntsen Top Security Rod Monument with a 2-1/2" dia. domed survey cap and permanent magnet encased in a white PVC pipe with a NGS style aluminum access cover.



This document was prepared by DCI on 09-30-2013 for use by Cerro Gordo County, Iowa.