

Cerro Gordo County, Iowa
 Iowa North Zone (1401)
 Horiz. Datum: **NAD83(NA2011)**
 Vert. Datum: NAVD 1988
 US Survey Feet
2013

Point Name: **168 (Replaces 121)**

Designation: 2013-168 GPS Control Pt. (Set by DCI in 2013)

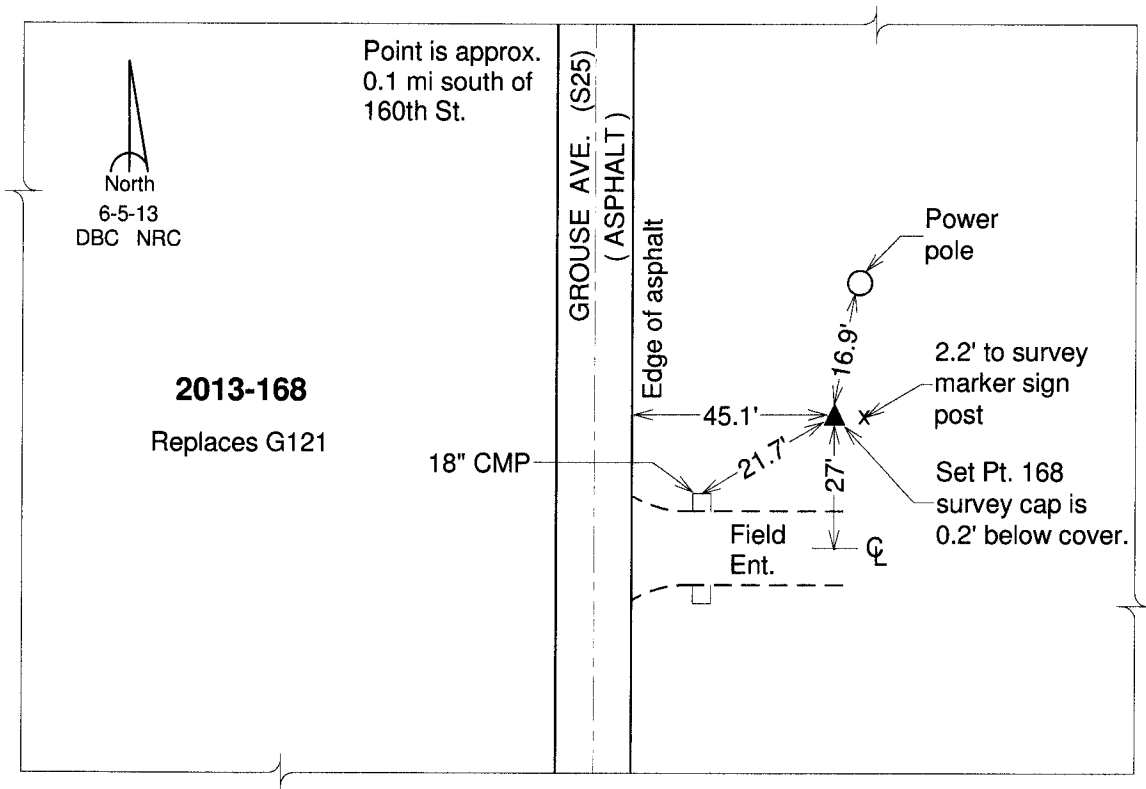
Northing: **3824891.39sft** Easting: **4953607.88sft**

Orthometric Height: **1206.52sft** Ellipsoid Height: **1114.80sft** **Geoid12A**

Latitude: **N42°59'34.23494"** Longitude: **W93°22'44.59940"**

Mapping Angle: **0°04'55"** Combination Scale Factor: **0.999908258**

Monument Type: Berntsen Top Security Rod Monument with a 2-1/2" dia. domed survey cap and permanent magnet encased in a white PVC pipe with a NGS style aluminum access cover.



This document was prepared by DCI on 09-30-2013 for use by Cerro Gordo County, Iowa.