

**Cerro Gordo County, Iowa**  
Iowa North Zone (1401)  
Horiz. Datum: **NAD83(NA2011)**  
Vert. Datum: NAVD 1988  
US Survey Feet  
**2013**

Point Name: **301**

**Designation:** G301 (2000-301 Floyd Co GPS Control Pt. Set by ASI in 2000)

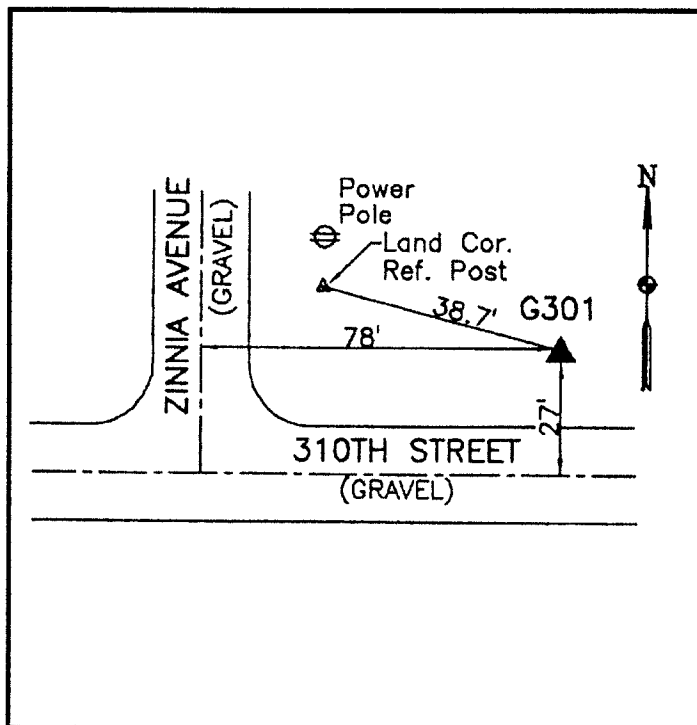
Northing: **3905426.16sft** Easting: **5048195.35sft**

Orthometric Height: **1157.06sft** Ellipsoid Height: **1060.67sft** **Geoid12A**

Latitude: **N43°12'46.39384"** Longitude: **W93°01'25.76406"**

Mapping Angle: **0°19'22"** Combination Scale Factor: **0.999940012**

**Monument Type:** 5/8" dia driven aluminum rod with a 2-1/2" dia aluminum cap and permanent magnet encased in a 5" dia PVC pipe with an aluminum access cover.



80' east of Zinnia Avenue - 25' north of Mitchell Line Street - near the SW Corner of Section 18-T97N-R18W.

**WHKS & CO.**

*This document was prepared by DCI on 09-30-2013 for use by Cerro Gordo County, Iowa.*