

Cerro Gordo County, Iowa  
Iowa North Zone (1401)  
Horiz. Datum: **NAD83(NA2011)**  
Vert. Datum: NAVD 1988  
US Survey Feet  
**2013**

Point Name: **302**

**Designation:** G302 (2000-302 Floyd Co GPS Control Pt. Set by ASI in 2000)

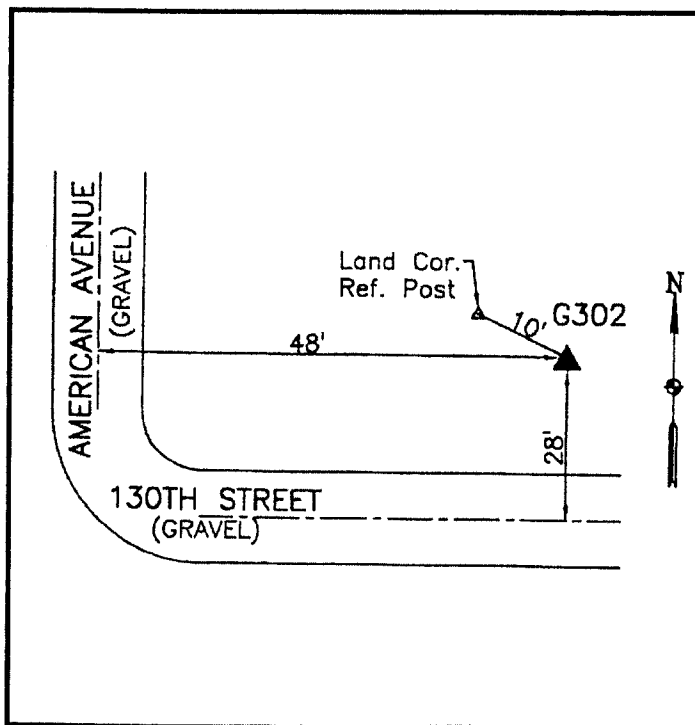
Northing: **3889566.76sft** Easting: **5050831.08sft**

Orthometric Height: **1146.80sft** Ellipsoid Height: **1049.73sft** **Geoid12A**

Latitude: **N43°10'09.60550"** Longitude: **W93°00'51.40310"**

Mapping Angle: **0°19'45"** Combination Scale Factor: **0.999933585**

**Monument Type:** 5/8" dia driven aluminum rod with a 2-1/2" dia aluminum cap and permanent magnet encased in a 5" dia PVC pipe with an aluminum access cover.



30' north of 130th Street - 50'  
east of American Avenue -  
near the S1/4 Corner of  
Section 31-T97N-R18W.

**WHKS & CO.**

*This document was prepared by DCI on 09-30-2013 for use by Cerro Gordo County, Iowa.*