

Cerro Gordo County, Iowa
Iowa North Zone (1401)
Horiz. Datum: **NAD83(NA2011)**
Vert. Datum: NAVD 1988
US Survey Feet
2013

Point Name: **303**

Designation: G303 (2000-303 Floyd Co GPS Control Pt. Set by ASI in 2000)

Northing: **3873781.75sft** Easting: **5048532.25sft**

Orthometric Height: **1079.93sft** Ellipsoid Height: **982.59sft** **Geoid12A**

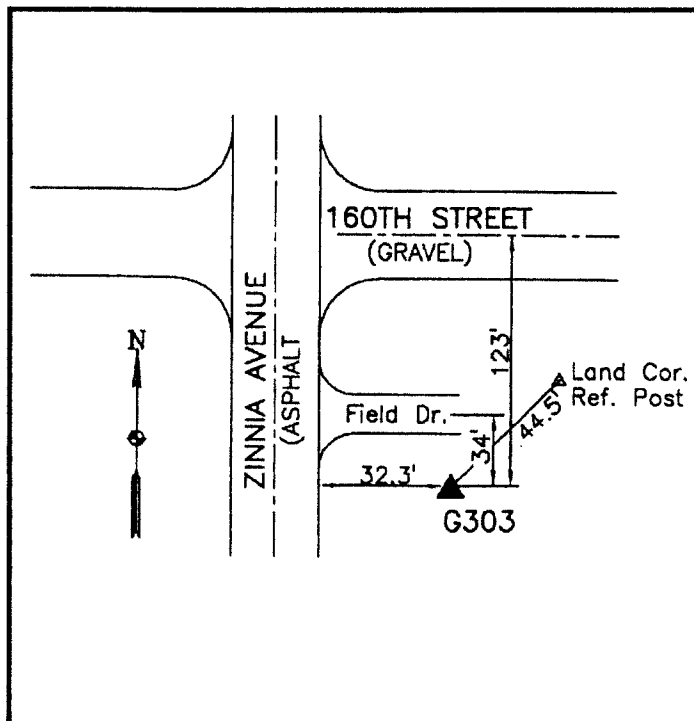
Latitude: **N43°07'33.82695"**

Longitude: **W93°01'23.62461"**

Mapping Angle: **0°19'23"**

Combination Scale Factor: **0.999930459**

Monument Type: 5/8" dia driven aluminum rod with a 2-1/2" dia aluminum cap and permanent magnet encased in a 5" dia PVC pipe with an aluminum access cover.



125' south of 160th Street - 30'
east of Zinnia Avenue (S 70) -
near the NW Corner of Section
19-T96N-R18W.

WHKS & CO.

This document was prepared by DCI on 09-30-2013 for use by Cerro Gordo County, Iowa.