

**Cerro Gordo County, Iowa**  
Iowa North Zone (1401)  
Horiz. Datum: **NAD83(NA2011)**  
Vert. Datum: NAVD 1988  
US Survey Feet  
**2013**

Point Name: **304**

**Designation:** G304 (2000-304 Floyd Co GPS Control Pt. Set by ASI in 2000)

Northing: **3858136.26sft** Easting: **5048515.99sft**

Orthometric Height: **1034.32sft** Ellipsoid Height: **936.49sft** **Geoid12A**

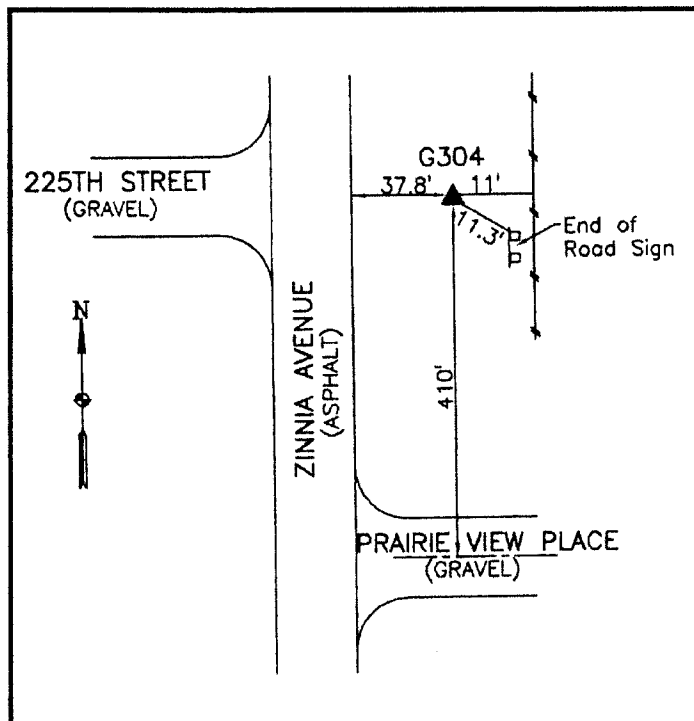
Latitude: **N43°04'59.29594"**

Longitude: **W93°01'25.03276"**

Mapping Angle: **0°19'22"**

Combination Scale Factor: **0.999926945**

**Monument Type:** 5/8" dia driven aluminum rod with a 2-1/2" dia aluminum cap and permanent magnet encased in a 5" dia PVC pipe with an aluminum access cover.



35' east of Zinnia Avenue (S 70) - on line with the extended centerline of 225th Street (Cerro Gordo County) - near the NW Corner of Section 6, T95N-R18W.

**WHKS & CO.**

*This document was prepared by DCI on 09-30-2013 for use by Cerro Gordo County, Iowa.*