

Cerro Gordo County, Iowa
Iowa North Zone (1401)
Horiz. Datum: **NAD83(NA2011)**
Vert. Datum: NAVD 1988
US Survey Feet
2013

Point Name: **306**

Designation: G306 (2000-306 Floyd Co GPS Control Pt. Set by ASI in 2000)

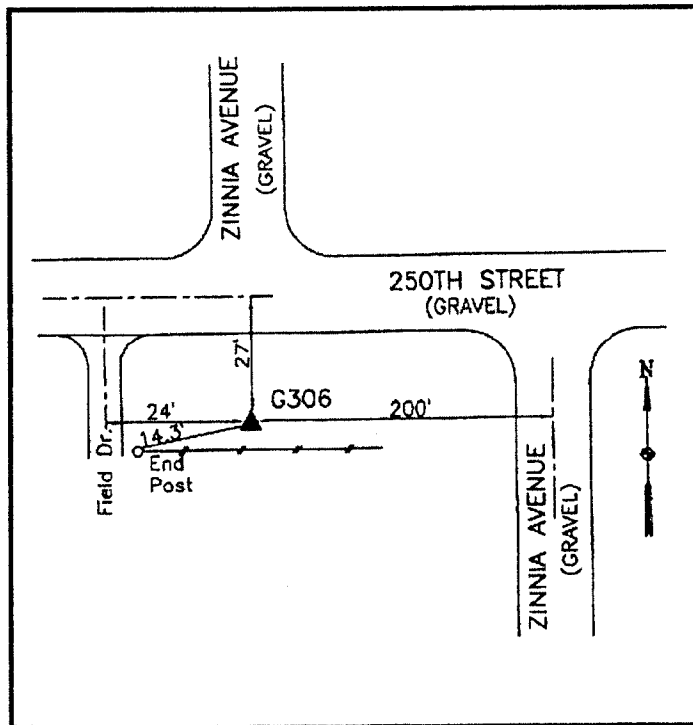
Northing: **3825826.88sft** Easting: **5048730.97sft**

Orthometric Height: **1111.73sft** Ellipsoid Height: **1012.98sft** **Geoid12A**

Latitude: **N42°59'40.15517"** Longitude: **W93°01'24.58988"**

Mapping Angle: **0°19'23"** Combination Scale Factor: **0.999913278**

Monument Type: 5/8" dia driven aluminum rod with a 2-1/2" dia aluminum cap and permanent magnet encased in a 5" dia PVC pipe with an aluminum access cover.



25' south of 250th Street and on line with the extended centerline of Zinnia Avenue - near the NW Corner of Section 6-T94N-R18W.

WHKS & CO.

This document was prepared by DCI on 09-30-2013 for use by Cerro Gordo County, Iowa.