

Cerro Gordo County, Iowa
Iowa North Zone (1401)
Horiz. Datum: **NAD83(NA2011)**
Vert. Datum: NAVD 1988
US Survey Feet
2013

Point Name: **307**

Designation: G307 (2000-307 Floyd Co GPS Control Pt. Set by ASI in 2000)

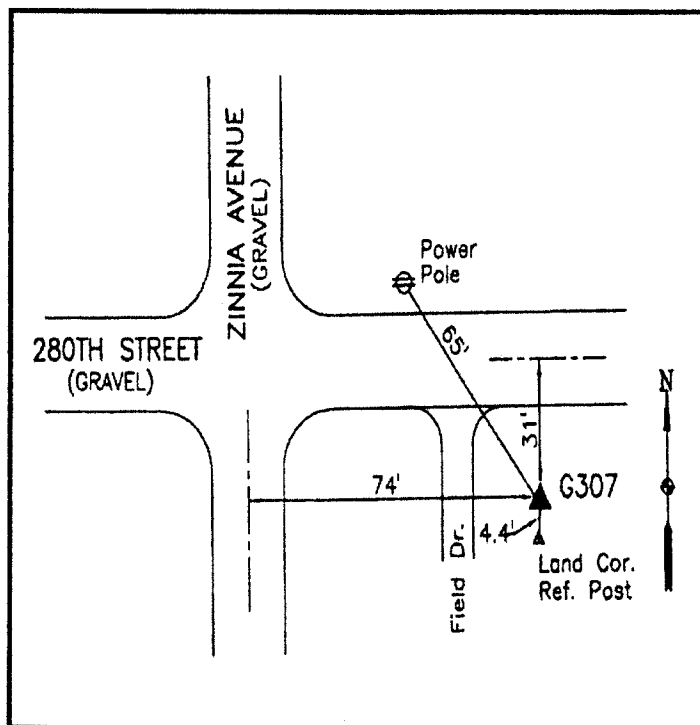
Northing: **3809924.39sft** Easting: **5048537.43sft**

Orthometric Height: **1095.53sft** Ellipsoid Height: **996.37sft** **Geoid12A**

Latitude: **N42°57'03.08974"** Longitude: **W93°01'28.39756"**

Mapping Angle: **0°19'20"** Combination Scale Factor: **0.999910022**

Monument Type: 5/8" dia driven aluminum rod with a 2-1/2" dia aluminum cap and permanent magnet encased in a 5" dia PVC pipe with an aluminum access cover.



75' east of Zinnia Avenue - 30' south of 280th Street - near the NW Corner of Section 19-T94N-R18W.

WHKS & CO.

This document was prepared by DCI on 09-30-2013 for use by Cerro Gordo County, Iowa.