

Cerro Gordo County, Iowa
Iowa North Zone (1401)
Horiz. Datum: **NAD83(NA2011)**
Vert. Datum: NAVD 1988
US Survey Feet
2013

Point Name: **401**

Designation: G1MC (Set by WHKS & Co. in 2002)

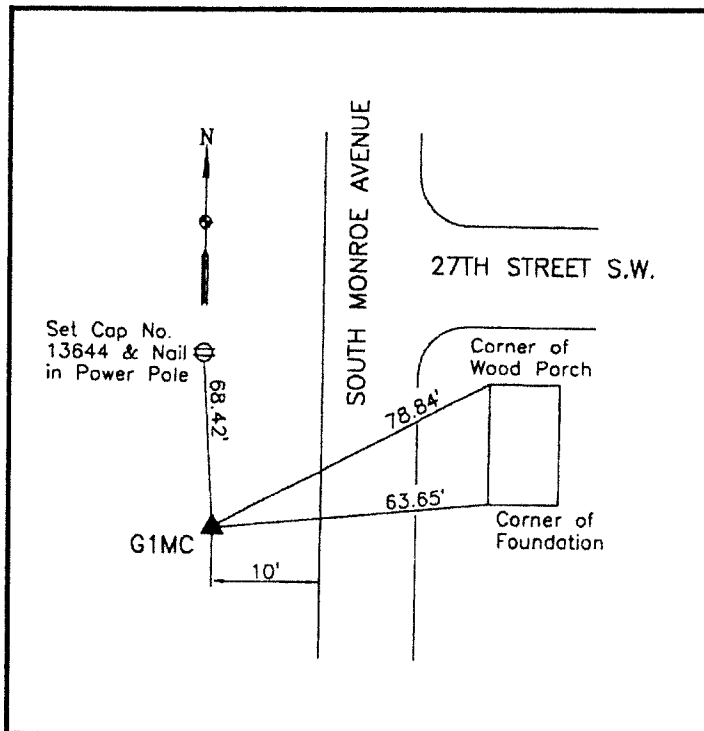
Northing: **3873608.32sft** Easting: **4998344.64sft**

Orthometric Height: **1188.95sft** Ellipsoid Height: **1096.01sft** **Geoid12A**

Latitude: **N43°07'34.35841"** Longitude: **W93°12'40.39532"**

Mapping Angle: **0°11'45"** Combination Scale Factor: **0.999925068**

Monument Type: 5/8" x 6'-0" long aluminum rod with cap stamped G1MC and NGS style access cover 3" deep.



West side South Monroe Avenue - 100'± south of 27th Street SW -

WHKS & CO.

This document was prepared by DCI on 09-30-2013 for use by Cerro Gordo County, Iowa.