

Cerro Gordo County, Iowa
Iowa North Zone (1401)
Horiz. Datum: **NAD83(NA2011)**
Vert. Datum: NAVD 1988
US Survey Feet
2013

Point Name: **404 (Replaced by 426)**

Designation: G4MC (Set by WHKS & Co. in 2002)

Northing: **3875463.88**sft Easting: **4995691.40**sft

Orthometric Height: **1162.90**sft Ellipsoid Height: **1070.08**sft **Geoid99**

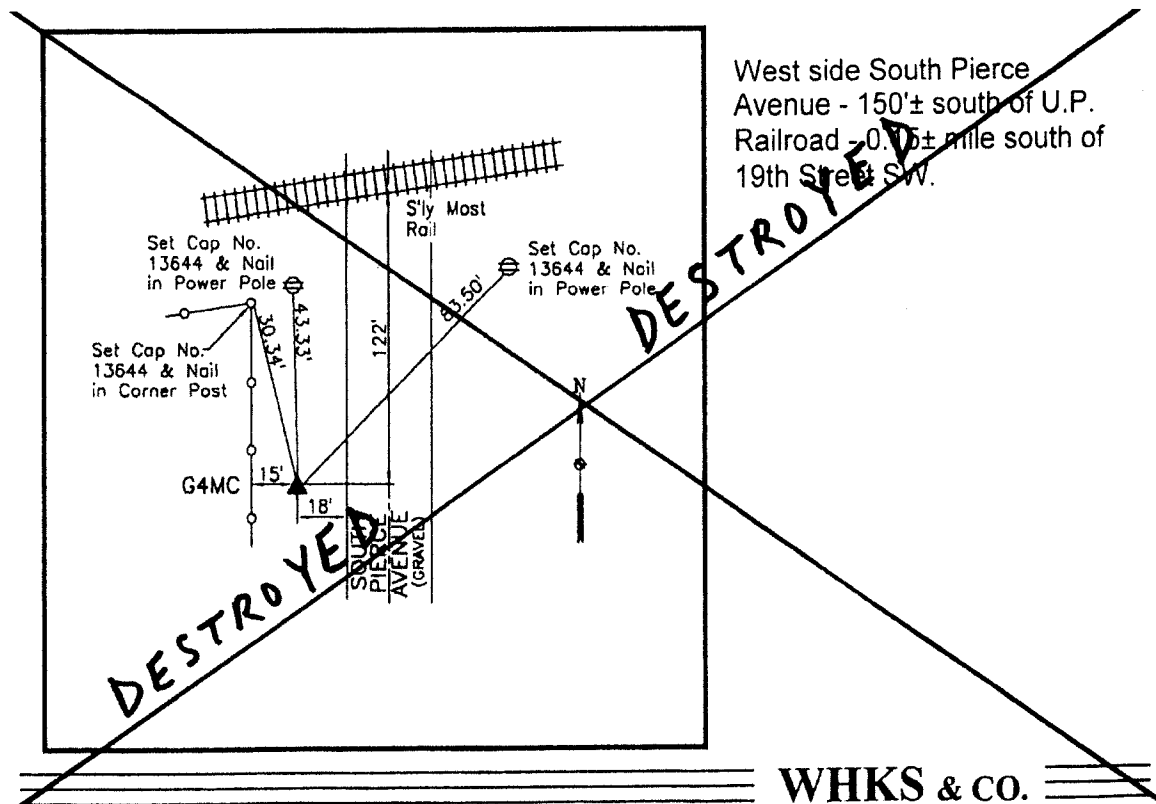
Latitude: **N43°07'52.77399"**

Longitude: **W93°13'16.09097"**

Mapping Angle: **0°11'20"**

Combination Scale Factor: **0.999927020**

Monument Type: 5/8" x 6' 0" long aluminum rod with cap stamped G4MC and NGS style access cover 2" deep.



This document was prepared by DCI on 09-30-2013 for use by Cerro Gordo County, Iowa.