

Cerro Gordo County, Iowa
Iowa North Zone (1401)
Horiz. Datum: **NAD83(NA2011)**
Vert. Datum: NAVD 1988
US Survey Feet
2013

Point Name: **408**

Designation: G8MC (Set by WHKS & Co. in 2002)

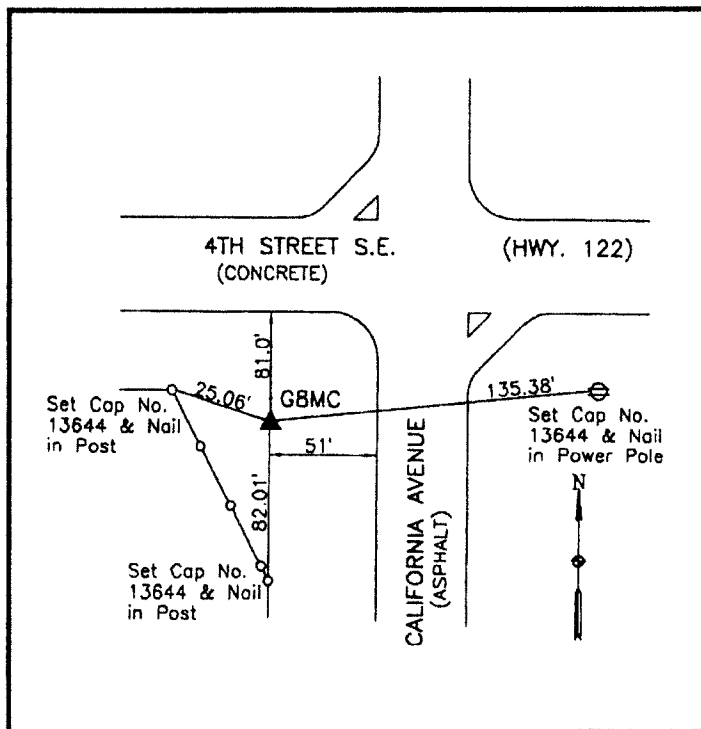
Northing: **3881617.02sft** Easting: **5021934.88sft**

Orthometric Height: **1113.91sft** Ellipsoid Height: **1019.37sft** **Geoid12A**

Latitude: **N43°08'52.54303"** Longitude: **W93°07'21.80791"**

Mapping Angle: **0°15'21"** Combination Scale Factor: **0.999931830**

Monument Type: 5/8" x 6'-0" long aluminum rod with cap stamped G8MC and NGS style access cover 1" deep.



SW Corner of intersection of
4th Street SE (Highway 122)
and California Avenue (Thrush
Avenue).

WHKS & CO.

This document was prepared by DCI on 09-30-2013 for use by Cerro Gordo County, Iowa.