

Cerro Gordo County, Iowa
Iowa North Zone (1401)
Horiz. Datum: **NAD83(NA2011)**
Vert. Datum: NAVD 1988
US Survey Feet
2013

Point Name: **410**

Designation: G10MC (Set by WHKS & Co. in 2002)

Northing: **3881765.09sft** Easting: **5011584.84sft**

Orthometric Height: **1069.66sft** Ellipsoid Height: **975.95sft** **Geoid12A**

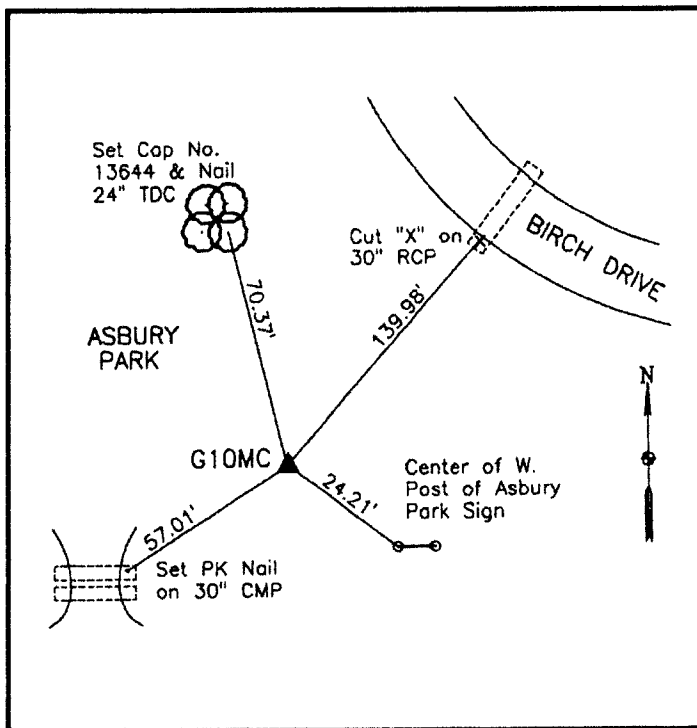
Latitude: **N43°08'54.43830"**

Longitude: **W93°09'41.41552"**

Mapping Angle: **0°13'46"**

Combination Scale Factor: **0.999933979**

Monument Type: 5/8" x 6'-0" long aluminum rod with cap stamped G10MC and NGS style access cover 1" deep.



In Asbury Park - north side 4th Street SE (Highway 122) - 15'± west and 12'± south of south end of pavement (Birch Drive).

WHKS & CO.

This document was prepared by DCI on 09-30-2013 for use by Cerro Gordo County, Iowa.