

Cerro Gordo County, Iowa
Iowa North Zone (1401)
Horiz. Datum: **NAD83(NA2011)**
Vert. Datum: NAVD 1988
US Survey Feet
2013

Point Name: **414**

Designation: G14MC (Set by WHKS & Co. in 2002)

Northing: **3882158.20sft** Easting: **4990427.85sft**

Orthometric Height: **1152.23sft** Ellipsoid Height: **1059.51sft** **Geoid12A**

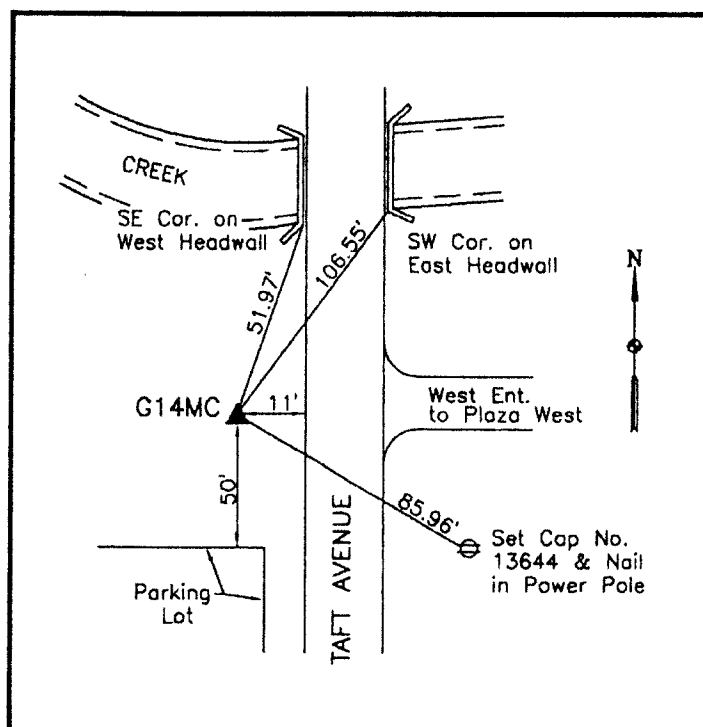
Latitude: **N43°08'59.05985"**

Longitude: **W93°14'26.79733"**

Mapping Angle: **0°10'32"**

Combination Scale Factor: **0.999930181**

Monument Type: 5/8" x 6'-0" long aluminum rod with cap stamped G14MC and NGS style access cover 1" deep.



On west side Taft Avenue -
600± north of Highway 122
(4th Street SW) - 25± north of
Northeast Corner ASP Parking.

WHKS & CO.

This document was prepared by DCI on 09-30-2013 for use by Cerro Gordo County, Iowa.