

**Cerro Gordo County, Iowa**  
Iowa North Zone (1401)  
Horiz. Datum: **NAD83(NA2011)**  
Vert. Datum: NAVD 1988  
US Survey Feet  
**2013**

Point Name: **416**

**Designation:** G16MC (Set by WHKS & Co. in 2002)

Northing: **3881888.98sft** Easting: **4979925.86sft**

Orthometric Height: **1160.96sft** Ellipsoid Height: **1068.35sft** **Geoid12A**

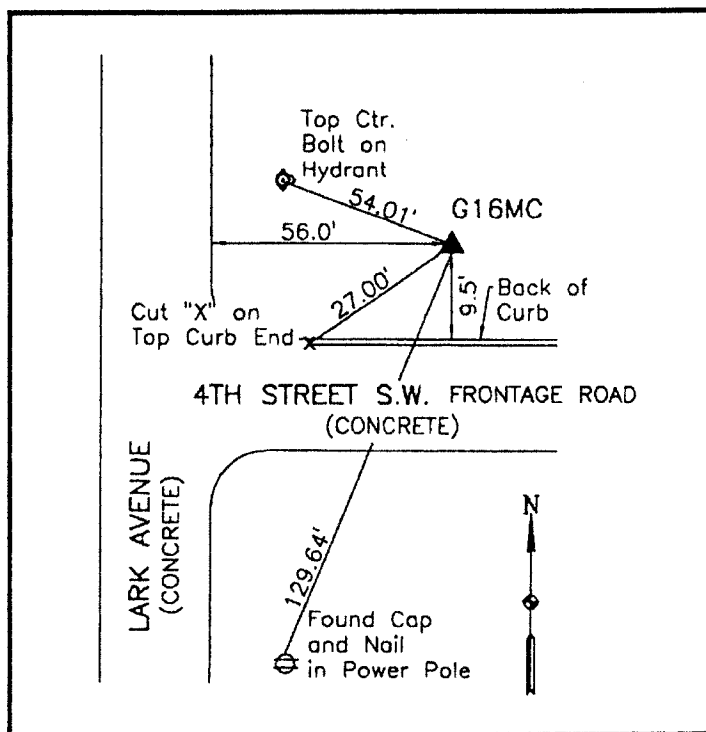
Latitude: **N43°08'56.69465"**

Longitude: **W93°16'48.47691"**

Mapping Angle: **0°08'56"**

Combination Scale Factor: **0.999929663**

**Monument Type:** 5/8" x 6'-0" long aluminum rod with cap stamped G16MC and NGS style access cover 2" deep.



NE Corner Lark Avenue and  
4th Street SW frontage road -  
10'± north of back of curb 4th  
Street SW.

**WHKS & CO.**

*This document was prepared by DCI on 09-30-2013 for use by Cerro Gordo County, Iowa.*