

Cerro Gordo County, Iowa
Iowa North Zone (1401)
Horiz. Datum: **NAD83(NA2011)**
Vert. Datum: NAVD 1988
US Survey Feet
2013

Point Name: 417

Designation: G17MC (Set by WHKS & Co. in 2002)

Northing: **3886826.08sft** Easting: **4986411.86sft**

Orthometric Height: **1162.20sft** Ellipsoid Height: **1069.48sft** **Geoid12A**

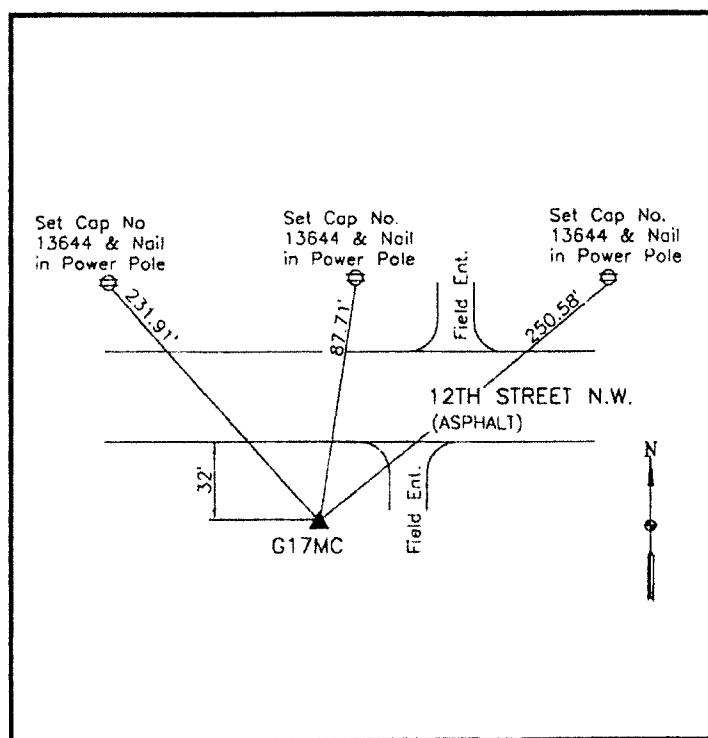
Latitude: **N43°09'45.28280"**

Longitude: **W93°15'20.79052"**

Mapping Angle: **0°09'56"**

Combination Scale Factor: **0.999931616**

Monument Type: 5/8" x 6'-0" long aluminum rod with cap stamped G17MC and NGS style access cover 1" deep.



On south side 12th Street NW
(275th Street) - 30'± west of
field entrance - 1000'± east of
Eisenhower Avenue (Mallard
Avenue).

WHKS & CO.

This document was prepared by DCI on 09-30-2013 for use by Cerro Gordo County, Iowa.