

Cerro Gordo County, Iowa
Iowa North Zone (1401)
Horiz. Datum: **NAD83(NA2011)**
Vert. Datum: NAVD 1988
US Survey Feet
2013

Point Name: **418**

Designation: G18MC (Set by WHKS & Co. in 2002)

Northing: **3885389.92sft** Easting: **4990413.82sft**

Orthometric Height: **1156.52sft** Ellipsoid Height: **1063.77sft** **Geoid12A**

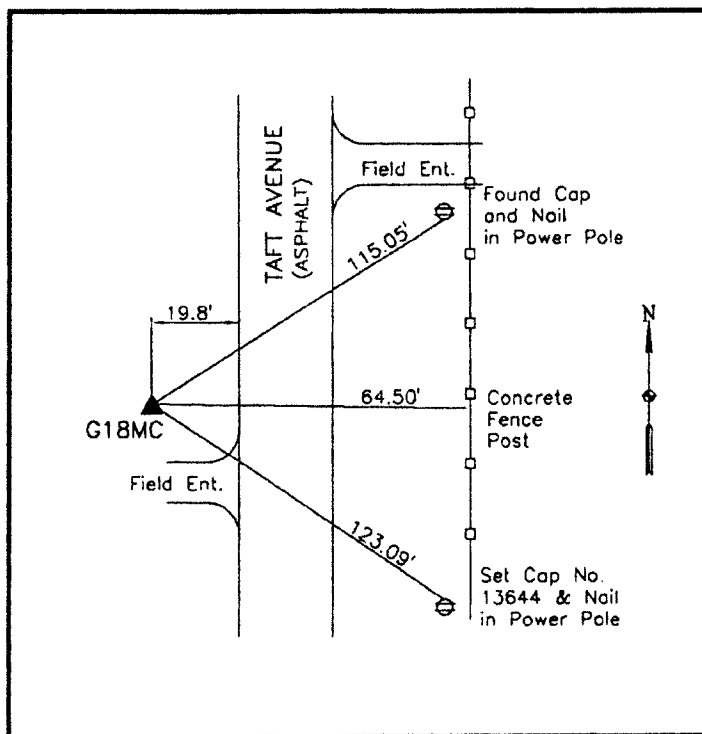
Latitude: **N43°09'30.98004"**

Longitude: **W93°14'26.85295"**

Mapping Angle: **0°10'32"**

Combination Scale Factor: **0.999931292**

Monument Type: 5/8" x 6'-0" long aluminum rod with cap stamped G18MC and NGS style access cover 1" deep.



On east side Taft Avenue -
30'± north of field entrance -
0.3± mile south of 12th Street
NW.

WHKS & CO.

This document was prepared by DCI on 09-30-2013 for use by Cerro Gordo County, Iowa.