

Cerro Gordo County, Iowa  
Iowa North Zone (1401)  
Horiz. Datum: **NAD83(NA2011)**  
Vert. Datum: NAVD 1988  
US Survey Feet  
**2013**

Point Name: **419**

**Designation:** G19MC (Set by WHKS & Co. in 2002)

Northing: **3886884.14sft** Easting: **4994342.67sft**

Orthometric Height: **1130.64sft** Ellipsoid Height: **1037.78sft** **Geoid12A**

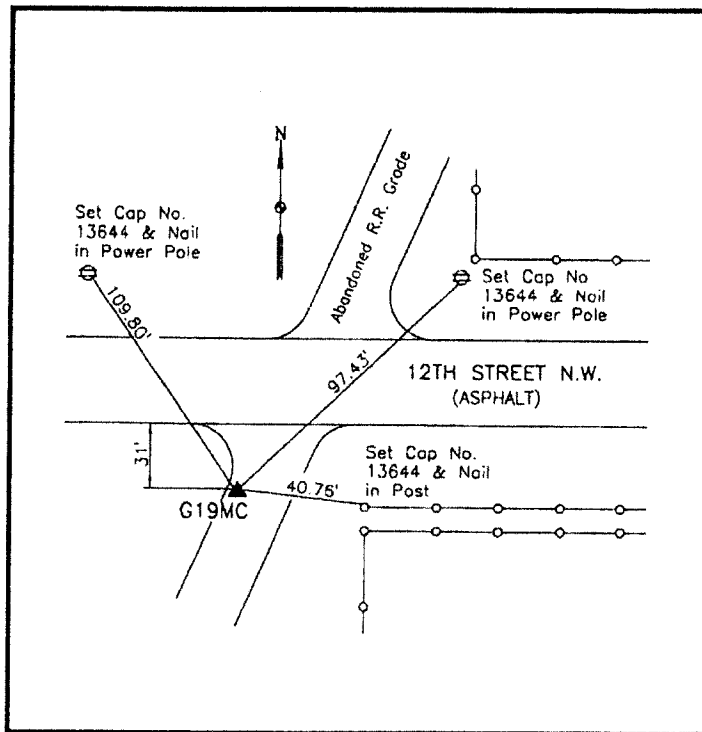
Latitude: **N43°09'45.61619"**

Longitude: **W93°13'33.78056"**

Mapping Angle: **0°11'08"**

Combination Scale Factor: **0.999933143**

**Monument Type:** 5/8" x 6'-0" long aluminum rod with cap stamped G19MC and NGS style access cover 2" deep.



On south side 12th Street  
NW - on west side entrance  
road - 0.2± mile west of Pierce  
Avenue.

**WHKS & CO.**