

**Cerro Gordo County, Iowa**  
Iowa North Zone (1401)  
Horiz. Datum: **NAD83(NA2011)**  
Vert. Datum: NAVD 1988  
US Survey Feet  
**2013**

Point Name: **421**

**Designation:** G21MC (Set by WHKS & Co. in 2002)

Northing: **3886983.86sft** Easting: **5011136.37sft**

Orthometric Height: **1091.50sft** Ellipsoid Height: **997.86sft** **Geoid12A**

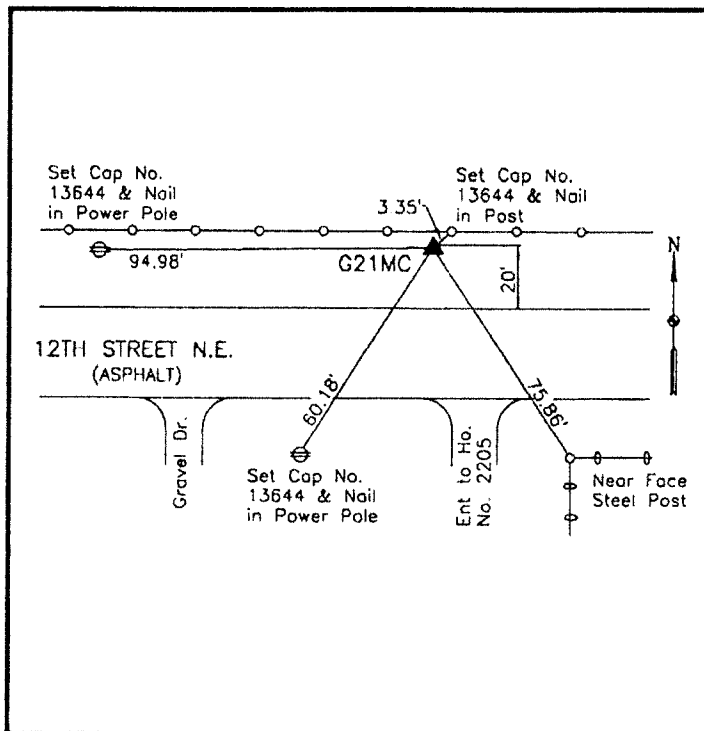
Latitude: **N43°09'46.00185"**

Longitude: **W93°09'47.18453"**

Mapping Angle: **0°13'42"**

Combination Scale Factor: **0.999935064**

**Monument Type:** 5/8" x 6'-0" long aluminum rod with cap stamped G21MC and NGS style access cover 1" deep.



On north side 12th Street NE - east side field entrance - 15'± west of mailbox marked "2205"

**WHKS & CO.**

*This document was prepared by DCI on 09-30-2013 for use by Cerro Gordo County, Iowa.*