

**Cerro Gordo County, Iowa**  
Iowa North Zone (1401)  
Horiz. Datum: **NAD83(NA2011)**  
Vert. Datum: NAVD 1988  
US Survey Feet  
**2013**

Point Name: **422**

**Designation:** G22MC (Set by WHKS & Co. in 2002)

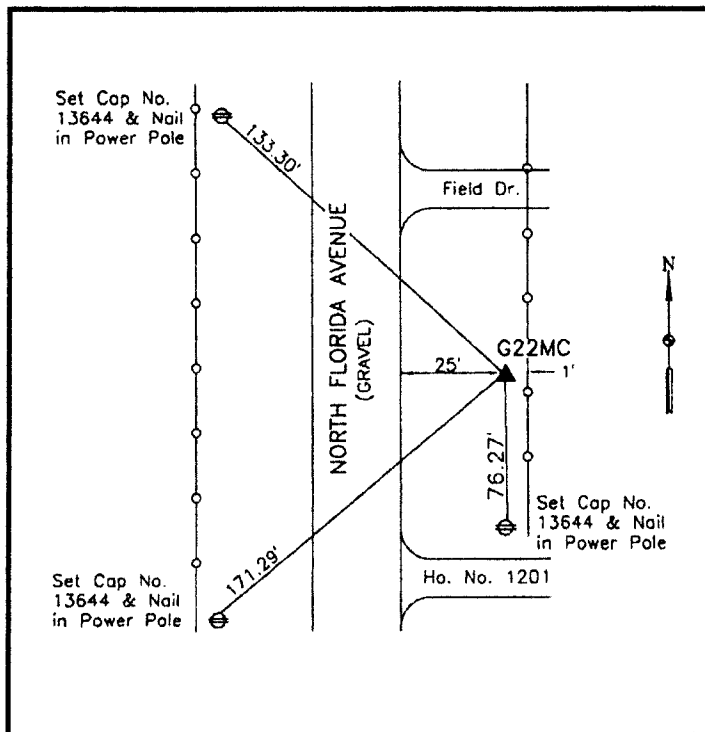
Northing: **3887646.41sft** Easting: **5016850.25sft**

Orthometric Height: **1113.12sft** Ellipsoid Height: **1019.08sft** **Geoid12A**

Latitude: **N43°09'52.31380"** Longitude: **W93°08'30.05161"**

Mapping Angle: **0°14'34"** Combination Scale Factor: **0.999934316**

**Monument Type:** 5/8" x 6'-0" long aluminum rod with cap stamped G22MC and NGS style access cover 3" deep.



On east side Florida Avenue (Spruce Avenue) - 100'± north of entrance to house - .012± mile north of 12th Street NE (275th Street).

**WHKS & CO.**

*This document was prepared by DCI on 09-30-2013 for use by Cerro Gordo County, Iowa.*