

**Cerro Gordo County, Iowa**  
Iowa North Zone (1401)  
Horiz. Datum: **NAD83(NA2011)**  
Vert. Datum: NAVD 1988  
US Survey Feet  
**2013**

Point Name: **423**

**Designation:** G23MC (Set by WHKS & Co. in 2002)

Northing: **3886708.13sft** Easting: **5021851.24sft**

Orthometric Height: **1142.83sft** Ellipsoid Height: **1048.38sft** **Geoid12A**

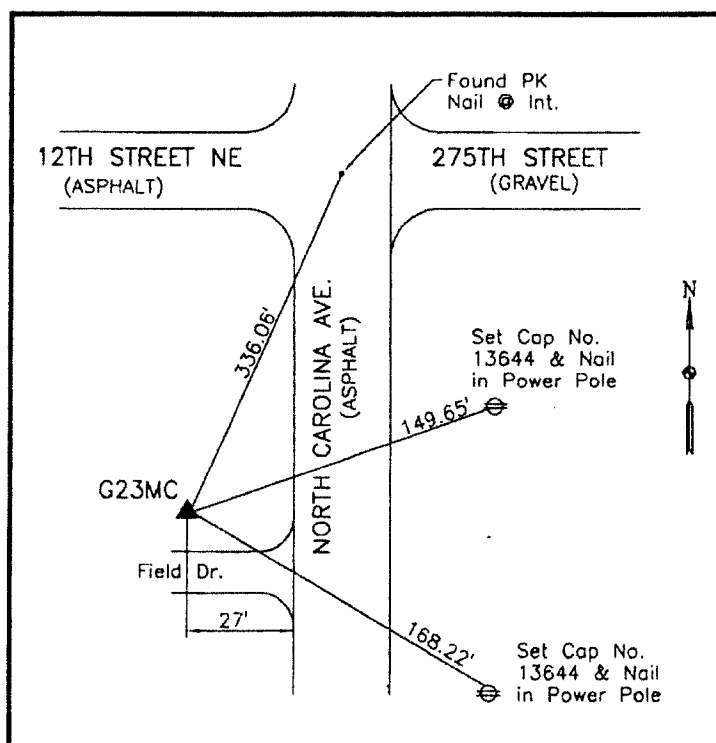
Latitude: **N43°09'42.83156"**

Longitude: **W93°07'22.62979"**

Mapping Angle: **0°15'20"**

Combination Scale Factor: **0.999932520**

**Monument Type:** 5/8" x 6'-0" long aluminum rod with cap stamped G23MC and NGS style access cover 2" deep.



On west side California Avenue (Thrush Avenue) - 300'± south of 12th Street NE (275th Street).

**WHKS & CO.** ≡≡≡

*This document was prepared by DCI on 09-30-2013 for use by Cerro Gordo County, Iowa.*