

Cerro Gordo County, Iowa
Iowa North Zone (1401)
Horiz. Datum: **NAD83(NA2011)**
Vert. Datum: NAVD 1988
US Survey Feet
2013

Point Name: **424**

Designation: G24MC (Set by WHKS & Co. in 2002)

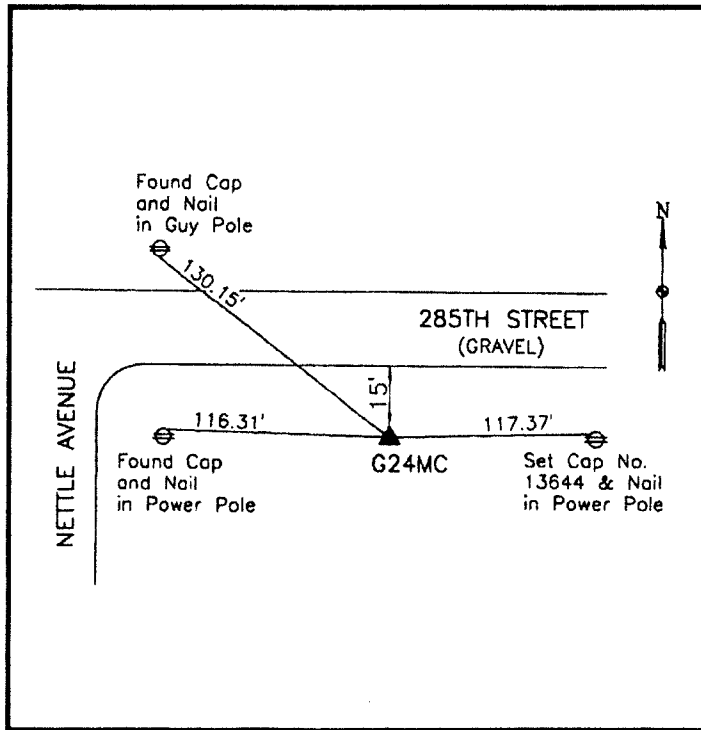
Northing: **3892018.07sft** Easting: **4990600.67sft**

Orthometric Height: **1147.03sft** Ellipsoid Height: **1054.19sft** **Geoid12A**

Latitude: **N43°10'36.44061"** Longitude: **W93°14'24.05699"**

Mapping Angle: **0°10'34"** Combination Scale Factor: **0.999934520**

Monument Type: 5/8" x 6'-0" long aluminum rod with cap stamped G24MC and NGS style access cover 2" deep.



SE Corner Taft Avenue (Nettle Avenue) and 25th Street NW (285th Street) - 100'± east of Taft Avenue.

WHKS & CO.

This document was prepared by DCI on 09-30-2013 for use by Cerro Gordo County, Iowa.