

2000  
Cherokee County, Iowa  
Iowa North Zone (1401)  
NAD\_83(1996)

Point Number: 1

Northing: 3675813.33(Ft)      Easting: 4301572.04(Ft)

Northing: 1120390.142(M)      Easting: 1311121.781(M)

Elev: 1308.69(Ft) NAVD\_88

Elev: 398.890(M) NAVD\_88      Ellip Ht: 371.696(M)      96C Geoid Ht: -27.193(M)

Latitude: 42-33-38.572298 N      Longitude: 95-48-01.613700 W

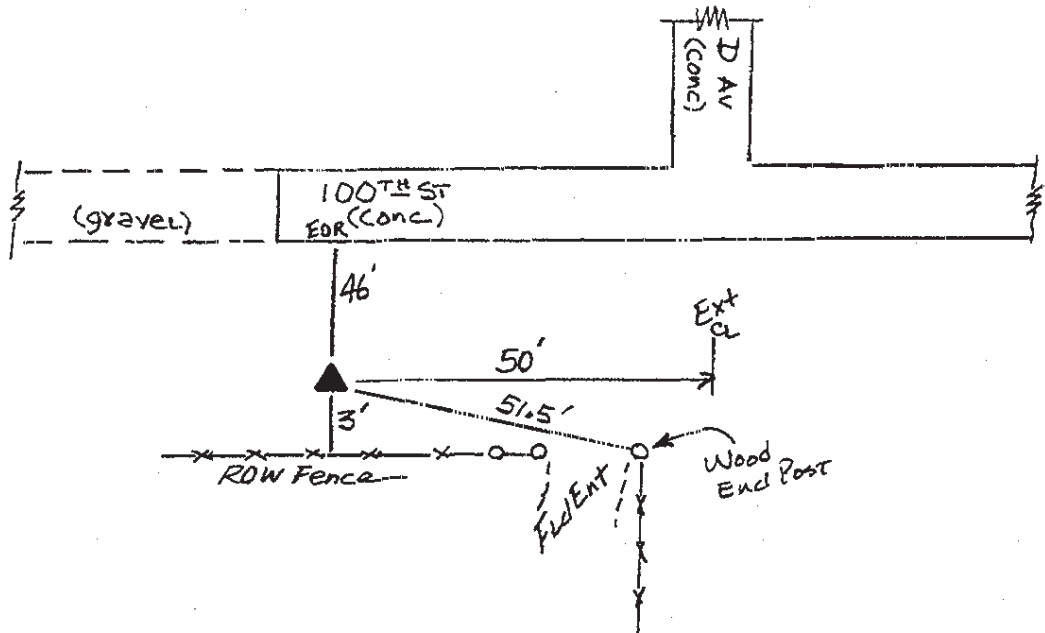
Theta: -1-33-32.82      Combination Factor: 0.99988878

Designation: **WOODBURY CO GPS PT #8017**

**Monument Type:** A standard disk set in the top of a concrete post

**To Reach:** 50ft South of 100th St and 50ft West of ext CL of "D" Ave Near the NE Cor of Sec 4, T89N, R42W

Date Printed August 29, 2000



001  
RKE/JJR  
April 2000