

2000  
Cherokee County, Iowa  
Iowa North Zone (1401)  
NAD\_83(1996)

Point Number: 15

Northing: 3770513.82(Ft)      Easting: 4320334.55(Ft)

Northing: 1149254.910(M)      Easting: 1316840.603(M)

Elev: 1426.63(Ft) NAVD\_88

Elev: 434.837(M) NAVD\_88      Ellip Ht: 407.618(M)      96C Geoid Ht: -27.220(M)

Latitude: 42-49-18.685782 N      Longitude: 95-44-24.511986 W

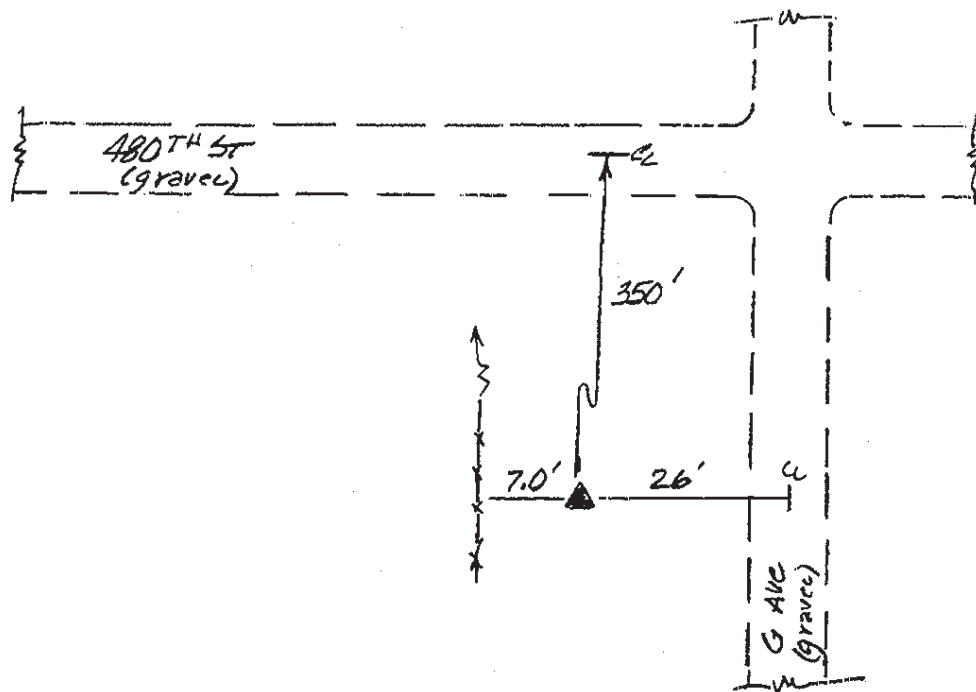
Theta: -1-31-05.68      Combination Factor: 0.99988502

Designation: **CHEROKEE CO GPS CONTROL PT 2000-015**

**Monument Type:** 5/8" dia driven aluminum rod with a 2-1/2" dia aluminum cap and permanent magnet encased in a 5" dia PVC pipe with an aluminum access cover.

**To Reach:** 25ft West of "G" Ave, 350ft South of 480th St, 0.1mile South of NE Cor of Sect, T92N, R42W

Date Printed August 29, 2000



**015**  
RKE/JJR  
April 2000