

2000
Cherokee County, Iowa
Iowa North Zone (1401)
NAD_83(1996)

Point Number: 17

Northing: 3801915.30(Ft) Easting: 4320909.83(Ft)

Northing: 1158826.102(M) Easting: 1317015.951(M)

Elev: 1389.45(Ft) NAVD_88

Elev: 423.504(M) NAVD_88 Ellip Ht: 396.333(M) 96C Geoid Ht: -27.171(M)

Latitude: 42-54-28.907782 N Longitude: 95-44-27.964135 W

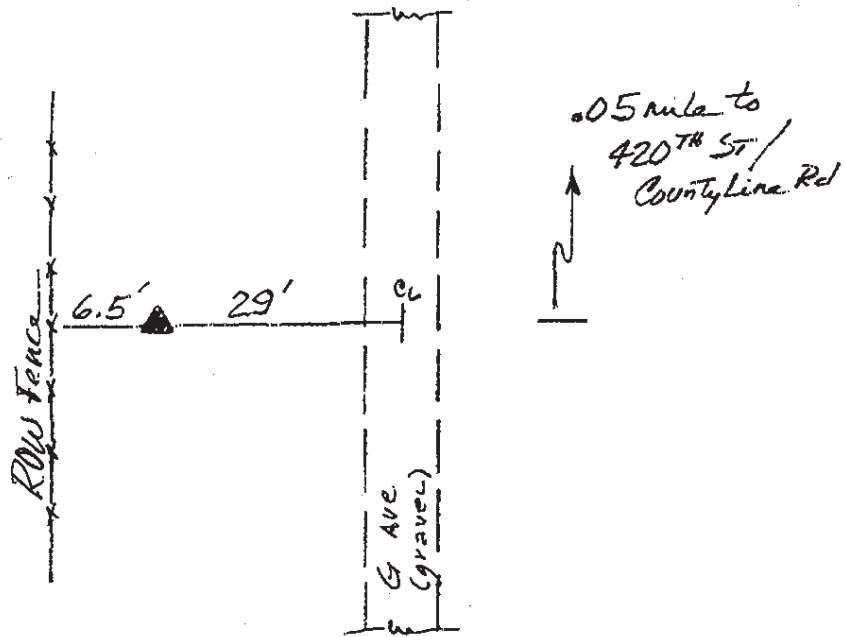
Theta: -1-31-08.02 Combination Factor: 0.99989196


Designation: **CHEROKEE CO GPS CONTROL PT 2000-017**

Monument Type: 5/8" dia driven aluminum rod with a 2-1/2" dia aluminum cap and permanent magnet encased in a 5" dia PVC pipe with an aluminum access cover.

To Reach: 30ft West of "G" Ave, 0.05mile South of 420th St, 0.05mile South of NE Cor of Sec 1, T93N, R42W

Date Printed August 29, 2000



 **017**
RKE/JJR
April 2000