

2000  
Cherokee County, Iowa  
Iowa North Zone (1401)  
NAD\_83(1996)

Point Number: 23

Northing: 3753932.74(Ft)      Easting: 4335874.10(Ft)

Northing: 1144200.989(M)      Easting: 1321577.069(M)

Elev: 1461.17(Ft) NAVD\_88

Elev: 445.365(M) NAVD\_88      Ellip Ht: 417.981(M)      96C Geoid Ht: -27.384(M)

Latitude: 42-46-38.966382 N      Longitude: 95-40-50.320441 W

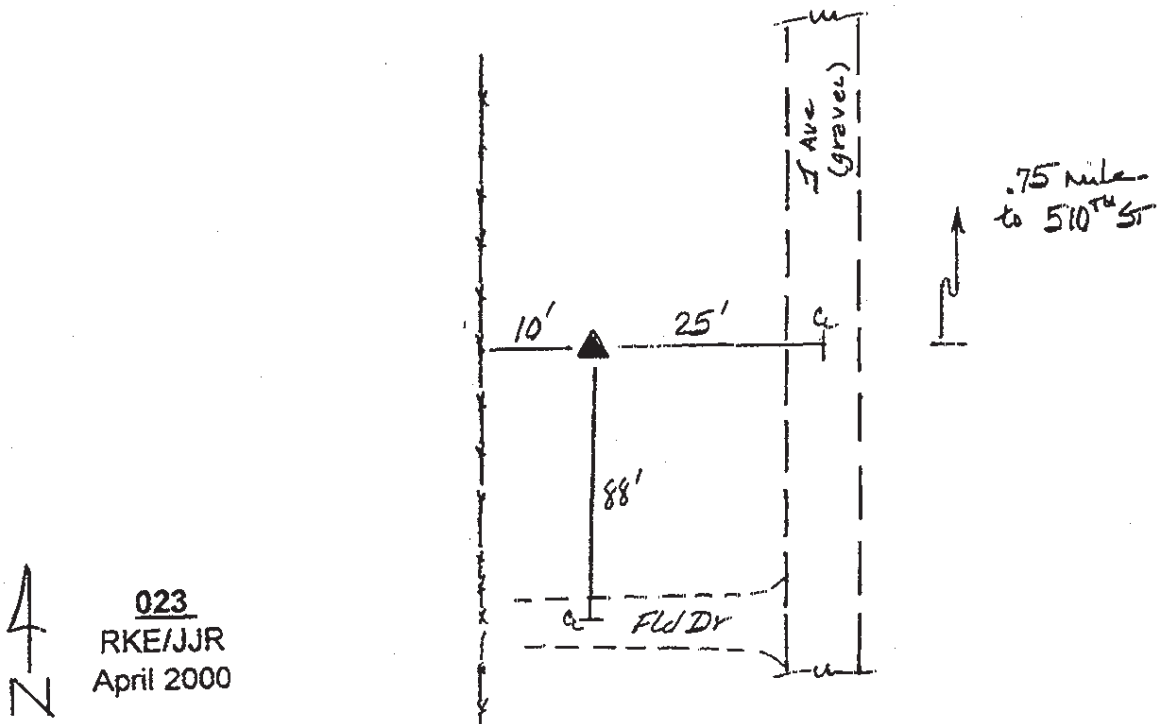
Theta: -1-28-40.51      Combination Factor: 0.99988161

Designation: **CHEROKEE CO GPS CONTROL PT 2000-023**

**Monument Type:** 5/8" dia driven aluminum rod with a 2-1/2" dia aluminum cap and permanent magnet encased in a 5" dia PVC pipe with an aluminum access cover.

**To Reach:** 25ft West of "J" Ave (L48), 0.1mile South of 510th St Near the NE Cor of Sec 21, T92N, R41W

Date Printed August 29, 2000



**023**  
RKE/JJR  
April 2000