

2000
Cherokee County, Iowa
Iowa North Zone (1401)
NAD_83(1996)

Point Number: 37

Northing: 3690577.71(Ft) Easting: 4365372.96(Ft)

Northing: 1124890.336(M) Easting: 1330568.338(M)

Elev: 1386.01(Ft) NAVD_88

Elev: 422.457(M) NAVD_88 Ellip Ht: 394.804(M) 96C Geoid Ht: -27.653(M)

Latitude: 42-36-20.643622 N Longitude: 95-33-54.131126 W

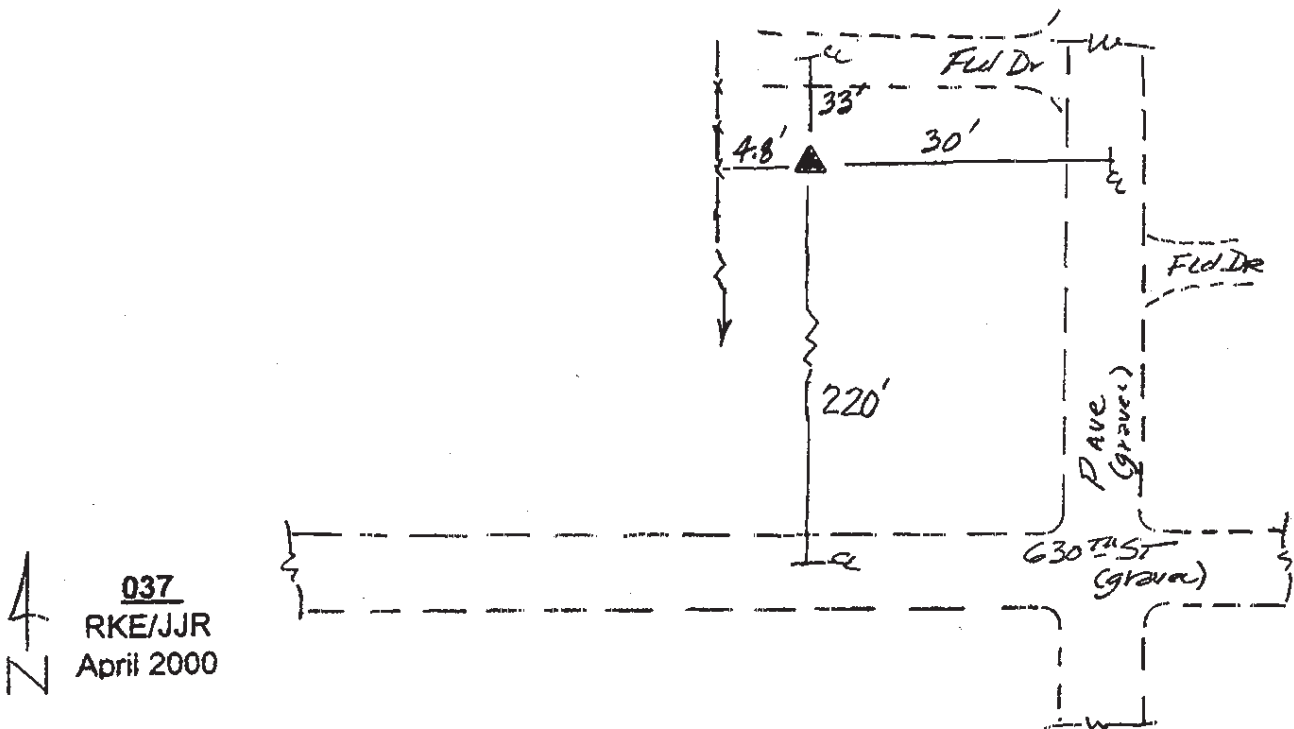
Theta: -1-23-58.44 Combination Factor: 0.99988400

Designation: **CHEROKEE CO GPS CONTROL PT 2000-037**

Monument Type: 5/8" dia driven aluminum rod with a 2-1/2" dia aluminum cap and permanent magnet encased in a 5" dia PVC pipe with an aluminum access cover.

To Reach: 30ft West of "P" Ave, 220ft North of 630th St in abandoned field ent to West Near the NE Cor of Sec 21, T90N, R40W

Date Printed August 29, 2000



037
RKE/JJR
April 2000