

2000
Cherokee County, Iowa
Iowa North Zone (1401)
NAD_83(1996)

Point Number: 67

Northing: 3736350.08(Ft) Easting: 4414183.73(Ft)

Northing: 1138841.781(M) Easting: 1345445.892(M)

Elev: 1382.30(Ft) NAVD_88

Elev: 421.326(M) NAVD_88 Ellip Ht: 393.283(M) 96C Geoid Ht: -28.044(M)

Latitude: 42-44-03.943452 N Longitude: 95-23-15.243139 W

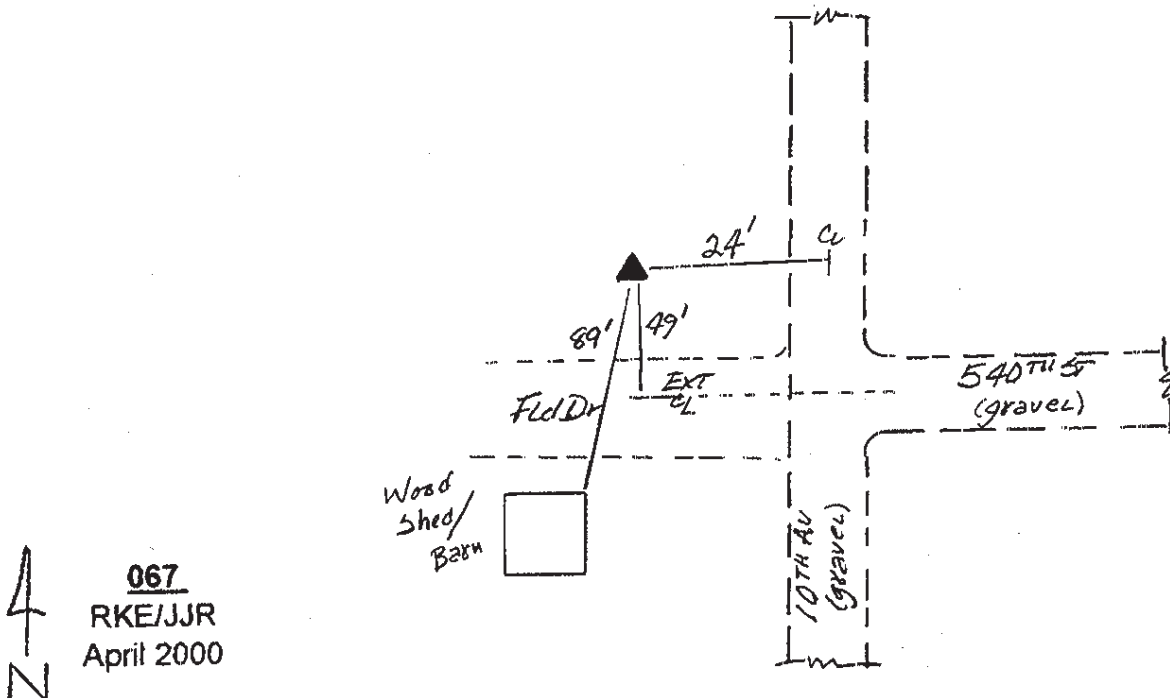
Theta: -1-16-45.44 Combination Factor: 0.99988433

Designation: **CHEROKEE CO GPS CONTROL PT 2000-067**

Monument Type: 5/8" dia driven aluminum rod with a 2-1/2" dia aluminum cap and permanent magnet encased in a 5" dia PVC pipe with an aluminum access cover

To Reach: 25ft West of 10th Ave, 50ft North of 540th St to the East Near the SE Cor of Sec 36, T92N, R39W

Date Printed August 29, 2000



067
RKE/JJR
April 2000