

2000
Cherokee County, Iowa
Iowa North Zone (1401)
NAD_83(1996)

Point Number: 69

Northing: 3768264.78(Ft) Easting: 4414773.54(Ft)

Northing: 1148569.401(M) Easting: 1345625.667(M)

Elev: 1425.60(Ft) NAVD_88

Elev: 434.524(M) NAVD_88 Ellip Ht: 406.418(M) 96C Geoid Ht: -28.106(M)

Latitude: 42-49-19.250838 N Longitude: 95-23-16.891751 W

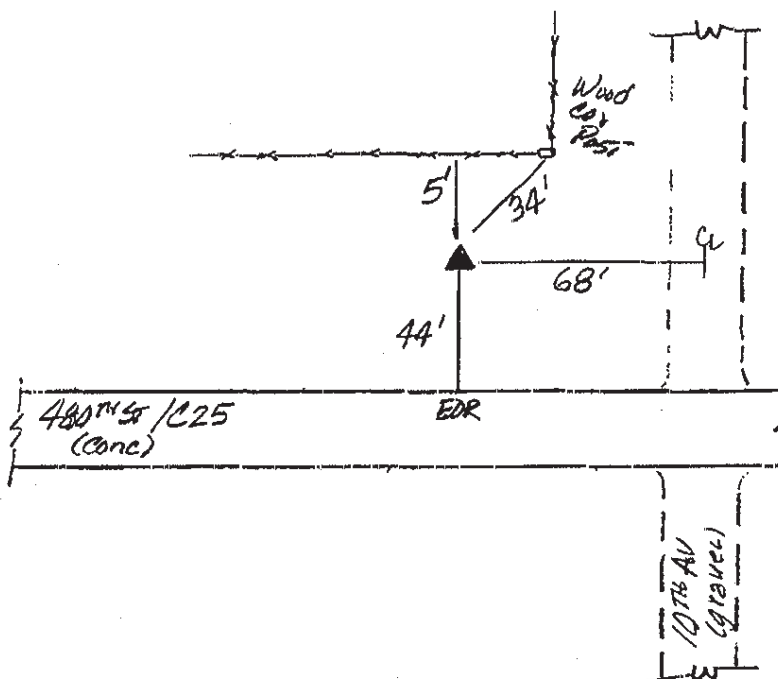
Theta: -1-16-46.56 Combination Factor: 0.99988521

Designation: **CHEROKEE CO GPS CONTROL PT 2000-069**

Monument Type: 5/8" dia driven aluminum rod with a 2-1/2" dia aluminum cap and permanent magnet encased in a 5" dia PVC pipe with an aluminum access cover.

To Reach: 45ft North of 480th St (C25), 70ft West of 10th Ave Near the SE Cor of Sec 36, T93N, R39W

Date Printed August 29, 2000



069
RKE/JJR
April 2000