

2001
Floyd, Chickasaw & Howard Counties, Iowa
Iowa North Zone (1401)
NAD_83(1996)

Point Number: **201**

Northing: **3906374.40**(Ft) Easting: **5173310.40**(Ft)

Northing: **1190665.298**(M) Easting: **1576828.163**(M)

Elev: **1188.85**(Ft) NAVD_88

Elev: **362.363**(M) NAVD_88 Ellip Ht: **331.746**(M) 96C Geoid Ht: **-30.616**(M)

Latitude: **43-12-45.36860** N Longitude: **92-33-16.20663** W

Theta: **0-38-26.90** Combination Factor: **0.99993851**

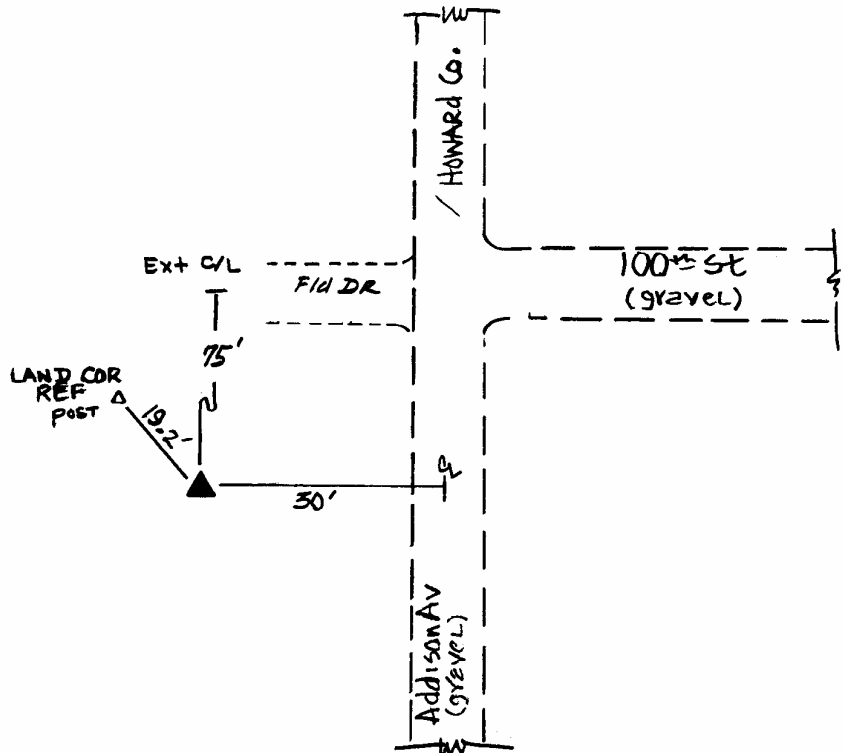
Designation: **CHICKASAW CO GPS CONTROL PT 2000-201**

Monument Type: 5/8" dia driven aluminum rod with a 2-1/2" dia aluminum cap and permanent magnet encased in a 5" dia PVC pipe with an aluminum access cover.

To Reach: 75ft S of 100th St., 30ft W of Addison Ave near the NE Cor of Sec 24 T97N R15W.

Date Printed January 17, 2001

4
N
Oct 2000
201



Set NGS style rod
monument with
aluminum access
cover.