

2001
Floyd, Chickasaw & Howard Counties, Iowa
Iowa North Zone (1401)
NAD_83(1996)

Point Number: **217**

Northing: **3906859.76**(Ft) Easting: **5204873.93**(Ft)

Northing: **1190813.237**(M) Easting: **1586448.747**(M)

Elev: **1178.47**(Ft) NAVD_88

Elev: **359.198**(M) NAVD_88 Ellip Ht: **328.652**(M) 96C Geoid Ht: **-30.545**(M)

Latitude: **43-12-46.45725** N Longitude: **92-26-09.93648** W

Theta: **0-43-15.80** Combination Factor: **0.99993905**

Designation: **CHICKASAW CO GPS CONTROL PT 2000-217**

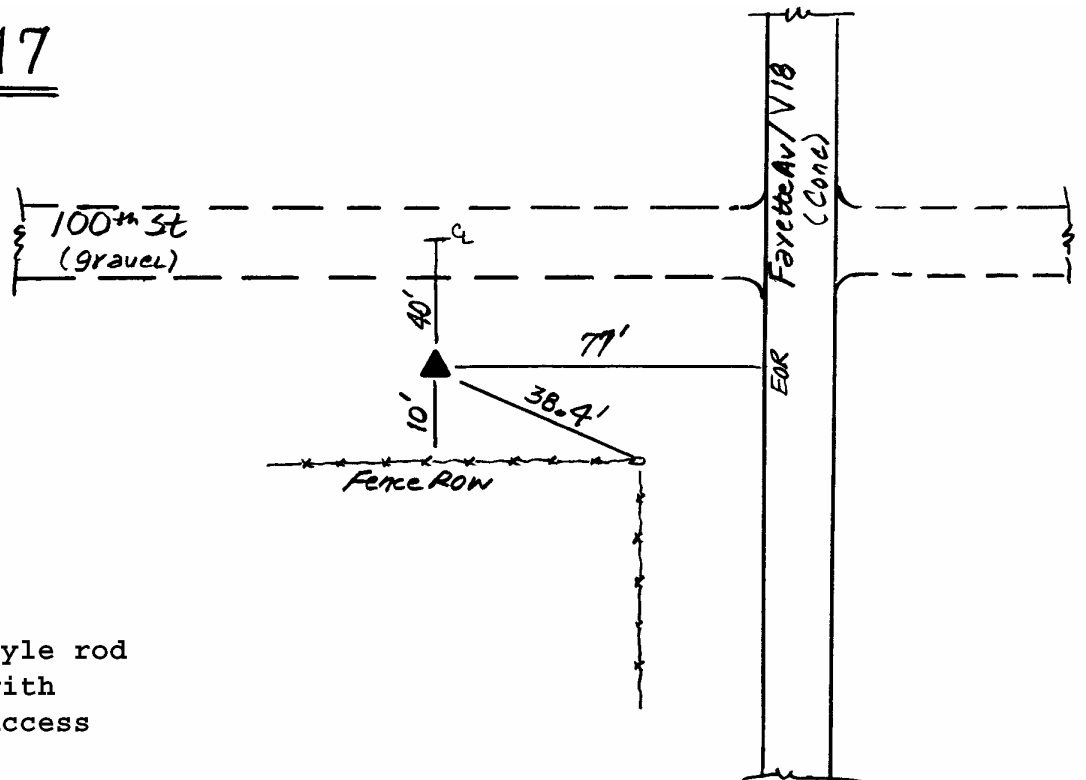
Monument Type: 5/8" dia driven aluminum rod with a 2-1/2" dia aluminum cap and permanent magnet encased in a 5" dia PVC pipe with an aluminum access cover.

To Reach: 75ft W of Fayette Ave (V 18), 40ft S of 100th St. near the NE Cor of Sec 24 T97N R14W.

Date Printed January 17, 2001

4
N
Oct 2000

217



Set NGS style rod
monument with
aluminum access
cover.