

2001
Floyd, Chickasaw & Howard Counties, Iowa
Iowa North Zone (1401)
NAD_83(1996)

Point Number: **250**

Northing: **3891690.32**(Ft) Easting: **5268244.38**(Ft)

Northing: **1186189.582**(M) Easting: **1605764.099**(M)

Elev: **1206.42**(Ft) NAVD_88

Elev: **367.716**(M) NAVD_88 Ellip Ht: **337.317**(M) 96C Geoid Ht: **-30.399**(M)

Latitude: **43-10-07.89035** N Longitude: **92-11-57.45493** W

Theta: **0-52-53.57** Combination Factor: **0.99993066**

Designation: **CHICKASAW CO GPS CONTROL PT 2000-250**

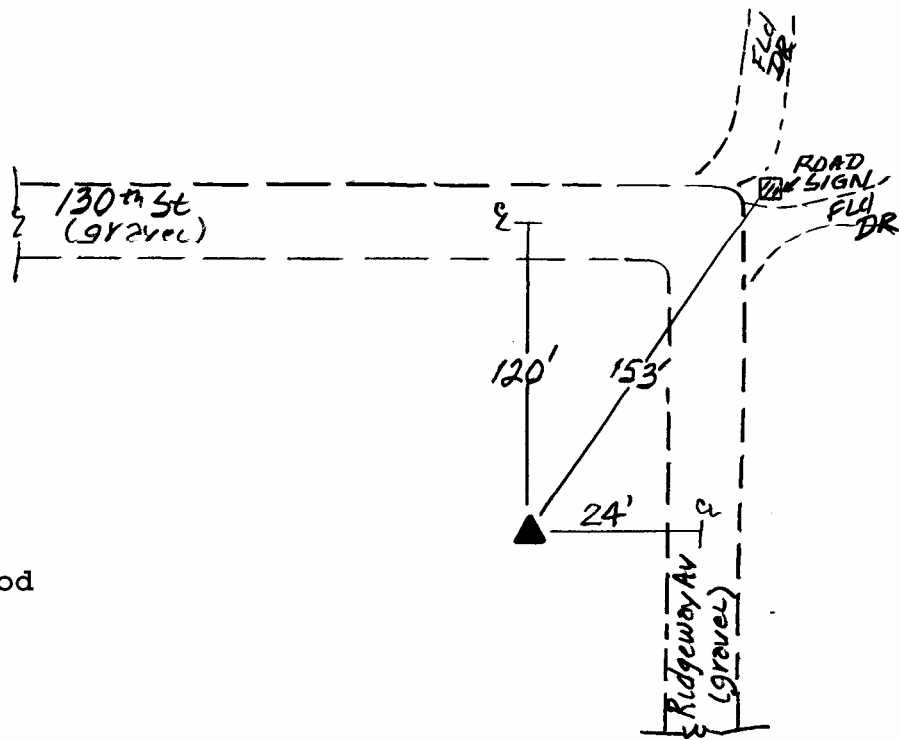
Monument Type: 5/8" dia driven aluminum rod with a 2-1/2" dia aluminum cap and permanent magnet encased in a 5" dia PVC pipe with an aluminum access cover.

To Reach: 120ft S of 130th St., 25ft W of Ridgeway Ave near the NE Cor of Sec 1 T96N R12W.

Date Printed January 17, 2001

4
N
Oct 2000

250



Set NGS style rod
monument with
aluminum access
cover.