

2001  
Floyd, Chickasaw & Howard Counties, Iowa  
Iowa North Zone (1401)  
NAD\_83(1996)

Point Number: **259**

Northing: **3876534.28**(Ft)      Easting: **5284032.05**(Ft)

Northing: **1181570.011**(M)      Easting: **1610576.189**(M)

Elev: **1187.78**(Ft) NAVD\_88

Elev: **362.035**(M) NAVD\_88      Ellip Ht: **331.604**(M)      96C Geoid Ht: **-30.430**(M)

Latitude: **43-07-35.75811** N      Longitude: **92-08-27.73031** W

Theta: **0-55-15.71**      Combination Factor: **0.99992538**

Designation: **CHICKASAW CO GPS CONTROL PT 2000-259**

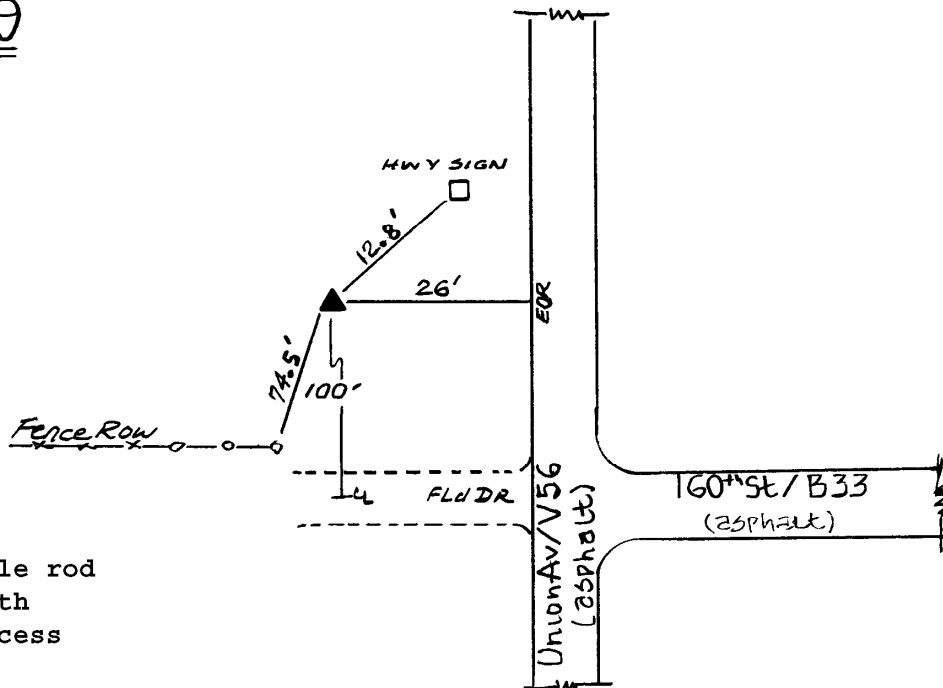
**Monument Type:** 5/8" dia driven aluminum rod with a 2-1/2" dia aluminum cap and permanent magnet encased in a 5" dia PVC pipe with an aluminum access cover.

**To Reach:** 100ft N of 160th St. (B 33), 25ft W of Union Ave (V 56) near the SE Cor of Sec 16 T96N R11W.

Date Printed January 17, 2001

↑  
N  
Oct 2000

259



Set NGS style rod  
monument with  
aluminum access  
cover.