

2001
Floyd, Chickasaw & Howard Counties, Iowa
Iowa North Zone (1401)
NAD_83(1996)

Point Number: **262**

Northing: **3828291.13**(Ft) Easting: **5284774.88**(Ft)

Northing: **1166865.470**(M) Easting: **1610802.605**(M)

Elev: **1188.73**(Ft) NAVD_88

Elev: **362.326**(M) NAVD_88 Ellip Ht: **331.681**(M) 96C Geoid Ht: **-30.645**(M)

Latitude: **42-59-39.18611** N Longitude: **92-08-28.17083** W

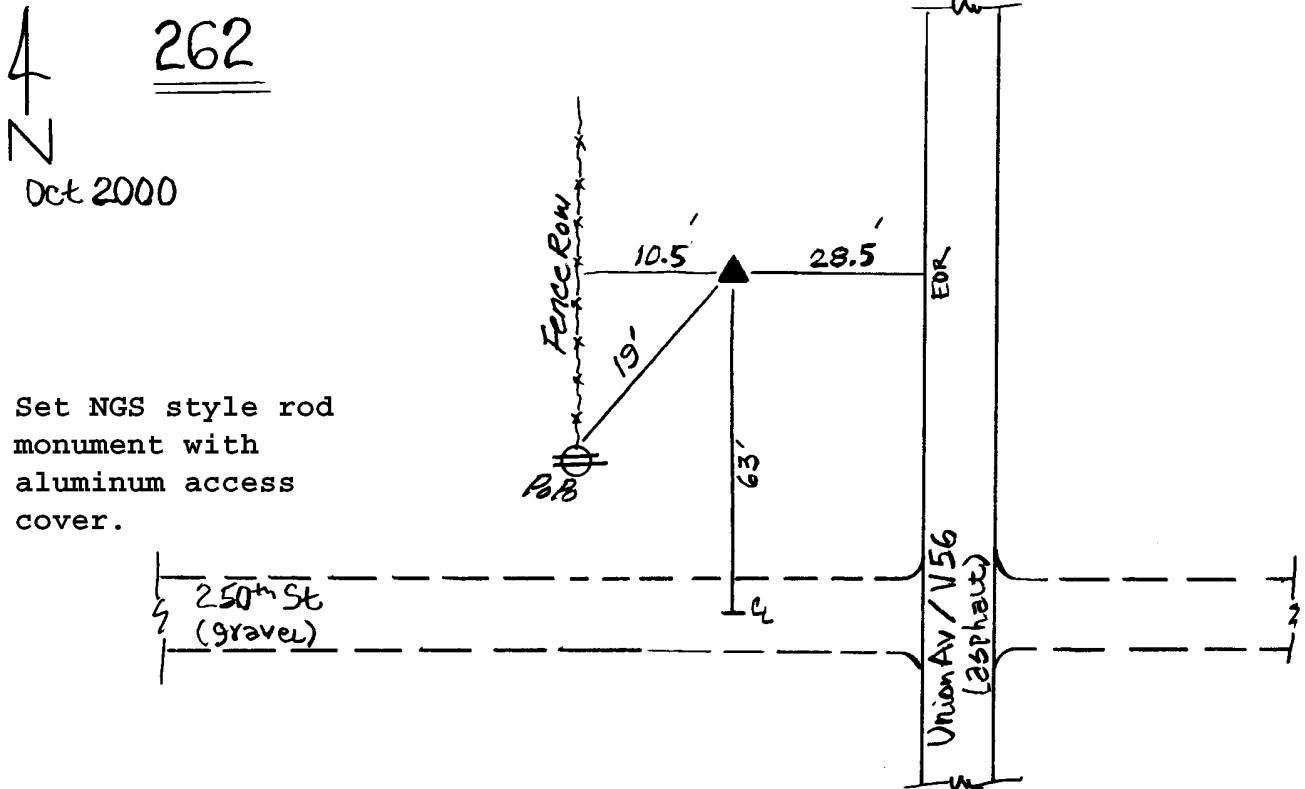
Theta: **0-55-15.41** Combination Factor: **0.99990953**

Designation: **CHICKASAW CO GPS CONTROL PT 2000-262**

Monument Type: 5/8" dia driven aluminum rod with a 2-1/2" dia aluminum cap and permanent magnet encased in a 5" dia PVC pipe with an aluminum access cover.

To Reach: 60ft N of 250th St., 30ft W of Union Ave (V 56) near the SE Cor of Sec 33 T95N R11W.

Date Printed January 17, 2001



Set NGS style rod
monument with
aluminum access
cover.