

2001
Floyd, Chickasaw & Howard Counties, Iowa
Iowa North Zone (1401)
NAD_83(1996)

Point Number: **263**

Northing: **3812069.30**(Ft) Easting: **5285155.21**(Ft)

Northing: **1161921.045**(M) Easting: **1610918.530**(M)

Elev: **1169.91**(Ft) NAVD_88

Elev: **356.590**(M) NAVD_88 Ellip Ht: **325.879**(M) 96C Geoid Ht: **-30.711**(M)

Latitude: **42-56-58.91328** N Longitude: **92-08-26.56334** W


Theta: **0-55-16.50** Combination Factor: **0.99990632**

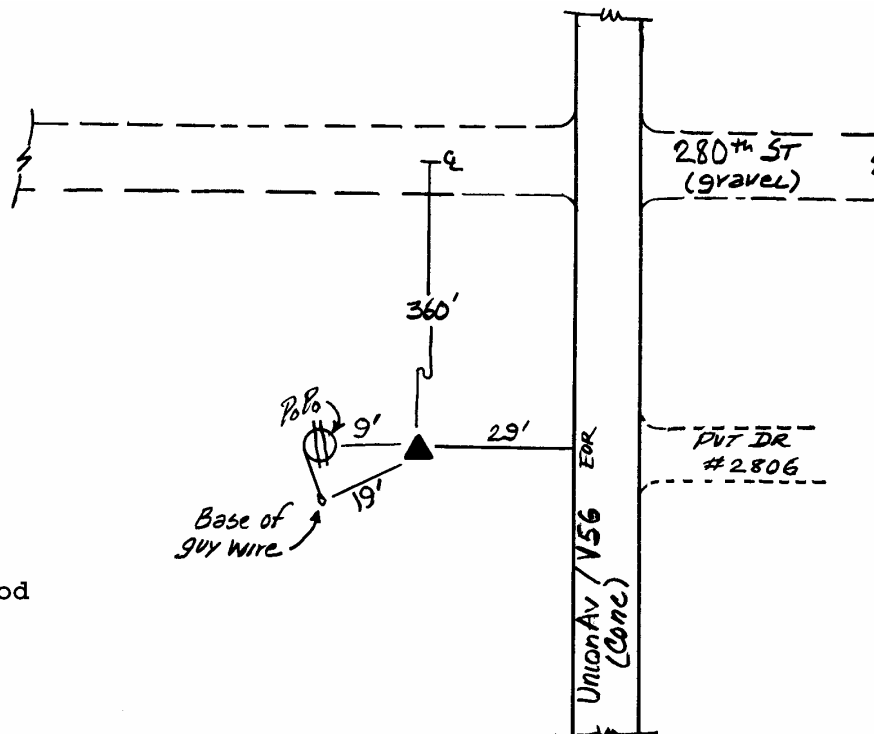
Designation: **CHICKASAW CO GPS CONTROL PT 2000-263**

Monument Type: 5/8" dia driven aluminum rod with a 2-1/2" dia aluminum cap and permanent magnet encased in a 5" dia PVC pipe with an aluminum access cover.

To Reach: 10ft S of pvt drive #2806 to the E, approx. 350ft S of 280th St., 30ft W of Union Ave (V56) in the NE 1/4 of Sec 21 T94N R11W.

Date Printed January 17, 2001

 263
Oct 2000



Set NGS style rod
monument with
aluminum access
cover.